

CANE

AUSTRALIAN

# GROWER



CANEGROWERS

20 November 2017 Price \$9.95

## Ag leaders call for support for industry programs, not more red tape



Peru trade  
deal opens  
door for  
Australian  
raw sugar  
exports



Cane  
growers  
recognised  
for efforts  
on water  
quality



Irrigation  
optimization:  
The secret  
to Greensill  
Farming's  
success



**WORKING  
WITH YOU 24/7**



**MASSEY FERGUSON**

# THREE YEARS WARRANTY MEANS NON STOP VALUE



*With a total of **THREE YEARS FACTORY WARRANTY** and **0.9% Finance** available on MF 7700 Series tractors, there's never been a better time to buy. Plus they're built tough with a host of available features designed to make light work of haulout jobs including:*

- Full cab suspension
- Full front axle suspension
- 50kph transmission
- Hydraulic or pneumatic trailer brakes

**0.9%  
FINANCE\***

**MF 7700 SERIES**  
140 – 255 HP

**CONTACT YOUR LOCAL MASSEY FERGUSON DEALER TODAY**

<b>Bundaberg</b>	Seng's Sales and Service	<b>07 4191 9000</b>	<b>Ingham</b>	Russo & Vella Machinery Pty Ltd	<b>07 4776 5195</b>
<b>Proserpine</b>	Proserpine Machinery Service	<b>07 4945 1388</b>	<b>Cairns</b>	Allclass North	<b>07 4050 7500</b>
<b>Townsville</b>	Allclass North	<b>07 4774 3149</b>			

\*0.90%p.a. based on minimum 20% deposit, the equipment GST component repaid after 4 months and monthly repayments over 48 months in arrears. Fees and lending conditions apply to approved ABN holders. AGCO Finance Pty Ltd ABN 42 107 653 878.

**MASSEYFERGUSON.COM.AU**

*A world of experience. Working with you.*

MASSEY FERGUSON®, MF®, the triple-triangle logo® is a worldwide brand of AGCO. © 2017.



# CONTENTS

20 November 2017



## Features

- 4 Support industry initiatives, not more red tape
- 5 Peru trade deal opens door for Australian sugar exports
- 9 Improving water quality with better irrigation management
- 11 Cane growers recognised for efforts on water quality
- 14 Irrigation optimisation: the secret to Greensill Farming's success
- 19 Cash up for grabs for innovative ideas
- 20 Muzzling the black dog - Justin's story

### Also inside:

- 2 Chairman's comment
- 4 News in brief
- 6 Regional round-up
- 12 QSL report
- 23 Classifieds
- 24 Rainfall report

COVER IMAGE: CANEGROWERS Chairman Paul Schembri (centre) with QFF President Stuart Armitage (left) and AgForce General President Grant Maudsley (right) call for industry BMP programs, not red tape, to be supported by candidates in the State Election campaign.

**Editor:** Wayne Griffin

**Design, subscriptions and classifieds:**  
Jacqui Segond

Articles appearing in *Australian Canegrower* do not necessarily represent the policies or views of CANEGROWERS

**Published every second Monday by**  
CANEGROWERS

Level 6, 100 Edward Street, Brisbane,  
Queensland Australia

ABN 94 089 992 969

Postal Address: GPO Box 1032, Brisbane,  
Queensland 4001 Australia

Telephone: 07 3864 6444; Fax: 07 3864 6429

Email: [info@CANEGROWERS.com.au](mailto:info@CANEGROWERS.com.au)

Website: [www.CANEGROWERS.com.au](http://www.CANEGROWERS.com.au)

AUSTRALIAN CANEGROWER ISSN 0157-3039

Volume 39 Number 23

Printed by Printcraft

23 Links Avenue, Eagle Farm QLD 4009

### Subscriptions

Yearly subscriptions for 25 issues (postage included)

Within Australia \$160 inc GST

Overseas (AUD) \$220

# 35,000 farmers demand a better deal

By Paul Schembri, Chairman CANEGROWERS

There is an old African proverb that says, "If you want to go fast, go alone. But if you want to go far, go together". That concept of achieving greater things by working together was the motivation behind CANEGROWERS teaming up with like-minded farmer associations during this Queensland State Election campaign.

On 7 November, CANEGROWERS hosted AgForce and the Queensland Farmers' Federation (QFF) at my home at Farleigh, Mackay.

Together, we wanted to send an important message to the community and the political aspirants - if the farming sector is to flourish, it is vital that we get the balance right between economic growth and environmental sustainability.

With a united voice we made it clear to the current State Government, and any potential new incoming government, that the pendulum has swung too far in favour of the over-regulation of farmers.

Unless we wind back some of the environmental red tape and farm-level environmental bureaucratic regulation, we will lose the great economic opportunity that Queensland's farm sector presents.

If that economic opportunity is lost, it won't just impact on farmers, it will have an adverse affect on the entire Queensland economy.

CANEGROWERS, AgForce and QFF together represent 35,000 farmers and \$10 billion of economic output from the farm sector.

In the sugar industry we are often cited as the great beneficiary of the Asian Century.

It is true that we will see 50% of the world demand for sugar come from Asia by 2050 and that Australia is well positioned to take geographic advantage of that.

As an industry we are also cited as the best fit for the production of renewable energy as biofuels and co-generation.

In fact, both the State and Federal governments actively promote this theme.

But sometimes governments can give you the vision—but not the tools to make it a reality.

To meet demand in Asia and to produce renewable energy we need to bring more area into cane production. To do so, we need to cut the red tape.

If we can't responsibly clear land and plant it with cane we will stagnate as an industry.

CANEGROWERS, AgForce and QFF have all called for continued funding of our BMP programs.

Farmers, not government, are better land stewards. BMP programs are driven by industry to optimise the economic and environmental outcomes for farmers.

Regulations don't encourage practice change or innovation—they simply force farmers to meet minimum standards of compliance.

Our Smartcane BMP program is gathering momentum, with 70% of the area under cane now benchmarked, 15% of which is accredited in the three core modules.

We hope that the campaigning political hopefuls will heed our message.

We are tired of carrying the environmental burden for city dwellers. We are capable of managing our landscapes but we need the shackles loosened so we can get on with the job of producing high quality food and fibre for Australia and the world. ■



*"To meet demand in Asia and to produce renewable energy we need to bring more area into cane production. To do so we, need to cut the red tape."*



# CANE COUNTRY WE'VE GOT YOU COVERED



## ACCESS THE BEST CANE-SPECIFIC COVER ON THE MARKET

Queensland is a beautiful place to live, but it can also be volatile and unpredictable. Making sure you have the right insurance cover is so important.

### Get the right cover

CANEGROWERS Insurance brokers have access to a range of insurers to provide you with the most competitive cover.

### No fees for members

As a membership service, no broking fees apply for CANEGROWERS members.

### We come to you

CANEGROWERS Insurance brokers will visit you on farm to talk over your insurance needs.

### Help to lodge claims

If something goes wrong and you need to report a claim, we are here to assist you during the claims process.

**Contact your local CANEGROWERS Office to discover how WE CAN HELP YOU!**

# NEWS IN BRIEF

## Support industry initiatives, not more red tape

Queensland's farm leaders have joined forces to call on the next state government to back industry programs, rather than bureaucratic intervention, as the best way to improve water quality for the Great Barrier Reef.

CANEGROWERS Chairman **Paul Schembri** hosted AgForce General President **Grant Maudsley** and Queensland Farmers' Federation President **Stuart Armitage** on his Mackay sugarcane farm this month

"We're standing together because we are united in the belief that our industry best management practice (BMP) programs are the most effective way for farmers to help the Reef," Mr Schembri said.

**"Give industry the responsibility of driving the future of our relationship with the Reef."**

"Over-zealous regulations, reaching down to interfere with a farmers' day to day work on the land, place a restrictive red tape burden on industry.

"Regulations promote a minimum standard but our cooperative farm

improvement programs encourage continual innovation and pride.

"The major parties campaigning in this State Election have been supportive of our sugarcane industry Smartcane BMP program and we urge them to now take the next step of giving industry the responsibility of driving the future of our relationship with the Reef.

"It is a challenge but as an industry we are up for it."

CANEGROWERS is calling on the next Queensland Government to back away from regulation and commit \$7.2 million to supporting Smartcane BMP over the next four years to assist growers to meet water quality targets for the whole community.

"Money spent on compliance would be better targeted towards partnerships between farmers and government," Mr Schembri said

Together, CANEGROWERS, AgForce and QFF represent industries worth over \$10 billion to the Queensland economy. ■

## COMMON SENSE CAMPAIGN

A National Farmers' Federation-led (NFF) campaign is calling on Government to restore common sense to heavy farm machinery movement regulations.

NFF Chief Executive Officer **Tony Mahar** said currently, heavy vehicle regulation across Australia was complex and inconsistent.

"The rules vary vastly from state to state and shire to shire and in many cases do not adequately recognise the needs of farm businesses."

Mr Mahar said farmers recognised the need for regulation, with safety their first priority.

"The last thing any farmer would want is to cause harm to another roaduser," he said.



"Farmers, their family and friends all travel country roads and we fully support all reasonable steps to ensure equipment is moved safely and responsibly."

However, Mr Mahar said if the regulations applying to farm machinery were not modernised, they threatened to place a handbrake on our burgeoning farm sector.

"Larger, more efficient farm vehicles and machines play an important part in keeping Australia's farmers competitive.

"Being able to move this equipment between properties is fundamental to the business of farming."

The NFF is asking regional road users to have their say in the oversized road regulations campaign and make the case for reform of the regulations.

Visit [www.farmers.org.au](http://www.farmers.org.au) for more information. ■





# Peru trade deal opens door for sugar exports

Australian raw sugar exporters can begin tapping a new market in Peru following the announcement of a trade deal between Australia and the South American nation this month.

The Peru Australia Free Trade Agreement allows access into Peru for up to 30,000 tonnes of Australian raw sugar in year one, increasing to 60,000 tonnes in year six and 90,000 tonnes in year 18.

CANEGROWERS Chairman Paul Schembri said Peru has agreed to market access for Australian raw sugar under terms it had never granted to any other country.

"The inclusion of sugar in the deal with Peru sends a clear message that sensitive commodities, which have been excluded from some past Australian trade agreements, can and should be included," Mr Schembri said.

"80% of the raw sugar produced from our cane is exported so every market

door that is opened is welcome as it increases the demand for Australian sugar."

"While the initial amounts of raw sugar that Peru may purchase are small compared to our annual production of more than 4.5 million tonnes, the

*"The inclusion of sugar in the deal with Peru sends a clear message that sensitive commodities, which have been excluded from some past Australian trade agreements, can and should be included."*

FTA will enable Australian exporters to establish and grow commercial relationships with refiners in Peru which has one of Latin America's fastest growing economies," said Mr Schembri, who is also the Chairman of the Trade Committee for the Australian Sugar Industry Alliance.

Over the past 10 years Peru had the fastest growing economy in Latin America with the same gross domestic product as Vietnam (about \$150 billion) and the same consumer base as Malaysia (30 million). Under the terms of the agreement, enhanced market access would be available from day one for sugar, dairy, rice, sorghum, sheep meat, seafood and wine. The FTA also includes staggered benefits for grains. ■

## THE LINDSAY ADVANTAGE IRRIGATION SOLUTIONS THAT INCREASE YOUR PROFITS



Lindsay is the single-source irrigation manufacturer that can develop the right system for your individual needs. We've combined the strengths of all Lindsay companies and products into one simple yet powerful package: the Plan to Profit Portfolio.

[www.lindsay.com](http://www.lindsay.com)

**Lindsay Australia Warehouse:** Lindsay International (ANZ) Pty Ltd 19 Spencer Street Toowoomba QLD 4350



© 2013 Lindsay. All rights reserved. Zimmatic is a trademark of the Lindsay Corporation.

# CANEGROWERS Regional round-up

## Mossman

The last cane bin was tipped at Mossman Mill at 6:03pm on Sunday 12 November bringing the 2017 season to a close, and not a moment too soon, as there has been good rain experienced over the district since.

Approximately 876,000 tonnes of cane was crushed at Mossman Mill for a mill average of 13.20 CCS.

The Tableland toll crush will have a final tonnage of approximately 300,000 tonnes of cane.

The CANEGROWERS Mossman AGM will be held on Thursday 30 November at the Mossman Bowls Club with the Grower End of Season meeting to follow immediately after.

All members are invited to attend.

## Tableland

Tableland cane growers are invited to attend an Electricity Forum on Wednesday 22 November 11am – 1pm at the Mareeba Leagues Club.

State Election candidates have been invited to put forward their party's policy positions on electricity pricing and tariffs.

The Tableland CANEGROWERS AGM / End of Season BBQ will be held on Tuesday 12 December at 6.30pm at the Mareeba Soccer Club.

## Cairns Region

Varying amounts of rain across the region continue to hamper harvesting and farming operations. Several early storms have been experienced. At the time of writing, both factories are close to 88% and holding to the five-year average CCS.

Both MSF and QSL are holding grower meetings regarding pricing options and will have staff ready to assist growers through this process.

## Tully

The harvest is nearing the final stages with more than 2,300,000 tonnes of the crop off and less than 200,000 tonnes to go. Recent showers have caused some disruption and have had a significant impact on CCS, with the daily CCS results now under 11.5 units. If this trend continues the seasonal average CCS will fall below 13, with 12.85 a probable end of season result.

Provided there is no further significant rain, the season will be completed around 24 November.

The rain is providing a boost to ratoons and plant cane and setting up the prospects of a good crop for 2018.

A water quality workshop is scheduled for 8 December and will feature a range of speakers. Growers will receive an update on current monitoring operations and will also have a chance to view some emerging technologies.

Growers and advisors met with the project team working on "How much N will my crop need". Growers were impressed with the findings to date and discussed how the research would apply to their farms.

The project is looking at the use of climate forecasts and soils information to predict the optimum amount of nitrogen needed for a cane crop in Tully.

CANEGROWERS Cairns Region is now hosting two extension officers under the WTSIP program.

Although relatively new to the cane industry, both are undertaking a training and mentoring program aimed at building capacity within the area.

Legume orders are now being finalised, with members taking delivery shortly.

## Burdekin

251,246 tonnes were crushed in the first week of resumption and 357,136 tonnes in the first full week of crushing operations for week ending 11 November.

This brings the season to date total to 7,126,501 tonnes crushed, or around 88% of estimate. The estimate of this year's crop has been revised upwards to 8.130 million tonnes following last month's rain.

CCS has also been impacted by the rain events, with average weekly CCS for the Burdekin tracking at 13.05 units and the seasonal average holding up at just over 14.

Some small quantities of Q247 and Q200 registering 14CCS and over were the standouts in the past two weeks when plant cane levels have dropped to less than 5% of weekly supply. Q183 was the major variety with 42% of supply.

Forecast finish dates have moved out a day or two, with the last mill estimated to finish around 4 December.

CANEGROWERS Burdekin will hold its Annual General Meeting on Tuesday 28 November. The guest speaker will be the new Sugar Terminals CEO John Warda.

There has been significant political activity around the 2017 Queensland Election with visits to the Burdekin from Pauline Hanson's One Nation and Senator Barry O'Sullivan.

Chairman Phil Marano was one of the interviewees featured on Channel Ten's The Project, which went to air in prime time on Sunday evening.

All candidates have either been presented with the Issues and Actions brochure prepared by CANEGROWERS or it has been emailed directly to those who haven't been accessible.



## Herbert River

Thursday 9 November brought an unfavourable and very concerning change to the weather pattern. This coincided with the declaration of the onset of a La Nina pattern by the US Climate Prediction Centre. The wet conditions are extremely challenging for harvesting groups as they search for paddocks with headlands that will support a harvester and haulouts as the soils become increasingly saturated.

With the best part of one million tonnes remaining to be harvested, the prospect of removing the whole crop by the end

of November has passed and the finish date is extending further towards mid-December if a break in the weather can emerge.

The unfavourable weather has seen CCS ease downwards from its trajectory prior to the late October rainfall, when it was on target to exceed the five-yearly averages for each pool.

Mill processing capacity is again behind the minimum performance target as expressed in the Collective Cane Supply Agreement.

The Cattle Creek bridge construction bund that was in place during the late October rainfall event caused serious concern amongst growers immediately upstream.

Large cane areas were inundated for several days prior to the bund being relieved.

CANEGROWERS Herbert River is communicating with Transport and Main Roads to work through a loss assessment and compensation process.

## Proserpine

The Proserpine harvest was wrapped-up late on Wednesday 8 November with the last bin tipped in the early hours of the following day.

Harvesting conditions over the final few days were extremely difficult as operators scrambled between showers to remove the last of the crop.

The 2017 crop totalled just over 1.434 million tonnes – a far cry from last year's 2 million tonne crop, but understandable given the impact from a Category 4 cyclone.

Regrettably, a small quantity of standover was necessary to complete an orderly shutdown at the mill.

Wet weather reduced CCS over the final weeks, however the unofficial seasonal CCS of 13.67 was better than expected under the circumstances.

Patchy rain continues to prevail across most of the district and is providing ideal conditions for next year's crop.

Growers are reminded that CANEGROWERS Proserpine and Sugar Services Proserpine AGMs will be held at 2:00pm on Friday 24 November at the Metropole Hotel. All members are encouraged to attend.

## Bundaberg

Bundaberg CANEGROWERS has had a busy fortnight of representing members, sponsoring the launch of the Queensland Industry Energy Alliance between CANEGROWERS, CCIQ and QFF and briefing election candidates in the Callide, Burnett and Bundaberg areas including sending the letter below:

*Dear Candidate,*

*The current Queensland Government seems intent on expanding Reef Regulations in to the Bundaberg Regional Council area.*

*It seems that they see regulation as a means of addressing a problem that does not exist.*

*When these regulations were first legislated in 2009 our region was specifically excluded from regulation because of our proven track record and at the time the Labor Minister responsible gave an undertaking (in Hansard) that there was no intention to expand the bill to include the Burnett catchment whatsoever.*

*We have been advised by a Senior officer from the Department of Environment and Heritage Protection that the proposed expansion of regulation was "...more to do with equitising the disbenefits of the unwieldy, poorly designed and woefully inadequate programs inflicted on other areas of the state than the future health of the state's waterways and the great barrier reef.*

*I have attached a submission that our office prepared and lodged with Department last Friday.*

*I have also attached letters from the Bundaberg Regional Council and the Burnett Mary Regional NRM Group.*

*Both of these organisations recognise that reef regulation is not needed in this region.*

*We fear that the continual focus on regulation will escalate reef fatigue and encourage the farming community to adopt a wait and react approach, rather than continue with the existing programs that we are operating and expanding.*

*We would appreciate your stance on this issue so that we can inform our members prior to the election on 25th November.*



*Continues page 8...*

## CANEGROWERS Regional round-up

### Mackay

The three Mackay mills crushed 176,822 tonnes for the week with wet weather stops, low quality cane and various mechanical issues hampering production. 4,418,045 tonnes or 88.4% of the crop has been harvested to date. Focus is on rate and availability for the remainder of the season.

#### Crush Stats

PRS for week 13.31

PRS Average to date 13.66

2017 Estimate: 5,000,000 tonnes

### Plane Creek

Reasonable throughput was recorded for the week although rain interrupted cane supply for about six hours. The season-to-date crushing total is now 1,155,681 tonnes, or 96% of the crop. Just over 25,000 tonnes of cane remain. The last cane is to be harvested and on the line by 6pm on Wednesday 15 November.

Average weekly CCS was 12.95, well down from 13.75 the previous week. The average bin weight dropped significantly, to 3.55 tonnes, due to the wet field conditions. About 650 tonnes of standover cane was crushed for the week. The highest CCS was 16.90, from a rake of Q183 3R in the Koumala productivity district.

Official rainfall of 4.2 mm was recorded at Plane Creek Mill for the week. However, falls of up to 60mm were recorded in some districts.

### Maryborough

MSF Sugar Maryborough has been able to maintain production for the past week or so with only minor delays.

Production has now reached 85% of estimated crop for year, with 512,130 tonnes of cane supplied to 11 November.

Season end is a relative question and while we are likely to reach our 600,000 estimated crop, just when we finish is to be revealed. This also means our end of season meeting is still to be confirmed.

Since our big wet we have seen a drop in the CCS with the average achieved last week 12.68 now adjusting the season average down to 14.02.

Plenty of planting activity is planned over the next few weeks and Barry is pretty busy organising orders at present.

With the election now a few weeks away, CANEGROWERS Maryborough has been busy meeting with candidates, ensuring they are all aware of the needs of the industry for this district.

To date our water needs are acknowledged by all the parties, although putting hard cash behind the promises is not so forthcoming.

Electricity is also a vital component for our operations and this is where differences lie between the major parties.

### Rocky Point

At the end of Week 20 (12 November) Rocky Point has crushed a total of 247,449 tonnes of cane at an average CCS of 13.50.

The Rocky Point Mill is still being hampered by cogen breakdowns.

We are around 55% crushed, with 115,000 tonnes of standover still to cut.

Directors are still in discussions with NSW to possibly send cane to Condong Mill from 5-21 December concurrently with Rocky Point Mill, in an effort to mitigate grower losses this season.

We've had inclement weather, which would have disrupted part of the harvest but because we've had so many stops it hasn't really been an issue. ■

## Money Matters

with AustSafe Super

### QUESTIONS TO ASK A FINANCIAL ADVISER

Choosing your adviser is an important decision, so it's a good idea to make sure you do your research.

Here are some simple questions you can ask to help you better understand if the adviser you're speaking to is right for you:

#### What are your qualifications and experience?

The adviser should outline their qualifications and provide you with their representative number and who holds their Australian Financial Services licence. You can check what they're licenced to provide advice on by visiting the MoneySmart website: [www.moneysmart.gov.au/investing/financial-advice/financial-advisers-register](http://www.moneysmart.gov.au/investing/financial-advice/financial-advisers-register)

#### How do you keep up-to-date with changes?

Financial advisers are obligated to undertake continued professional development (CPD) throughout the year. If it's not met then they won't be able to provide you with advice.

#### How are you paid and how much is this advice likely to cost me?

The adviser should give you a Financial Services Guide, which will tell you how they are paid. They should also outline what will be included in the fees you pay and whether there will be any additional costs in preparing your statement of advice.

#### How AustSafe Super can help

AustSafe Super members have access to personal advice from an AustSafe Super Financial Planner<sup>1</sup>. They can help you understand if you need advice and tailor a solution to suit your needs. Give us a call on **1300 131 293** to start the conversation today.

For more information, please visit [austsafe.com.au](http://austsafe.com.au)

1 Austsafe Pty Ltd ABN 96 010 528 597 AFSL 314183 RSE Licence L0002035 has engaged Industry Fund Services Limited (IFS) ABN 54 007 016 195 AFSL No 232514 to facilitate the provision of financial advice to AustSafe Super members. Advice is provided by one of our financial planners who are Representatives of IFS. Fees may apply. Further information is available by calling 1300 131 293.





# IMPROVING WATER QUALITY

by better managing irrigation on cane farms

*The National Environmental Science Programme (NESP) Tropical Water Quality Hub project focuses on improving irrigation management by integrating the auto-irrigation system (for example, the WiSA system) and IrrigWeb (a sugarcane irrigation scheduling tool) to provide a smarter irrigation solution using the 'Internet of Things' (IoT).*



*Pictured: Burdekin sugarcane farmer Aaron Linton.*

The system generates a two-way communication channel between these two platforms, which allows them to share data.

During the first three months of this project, the project team has been working on linking Burdekin sugarcane farmer Aaron Linton's automated system to IrrigWeb.

As readers of the *Australian Canegrower* would be aware, Aaron has automated both furrow and trickle irrigation at his property and is seeing a range of positive outcomes.

The first week of August saw the WiSA system connecting with IrrigWeb and uploading data automatically.

Irrigation records of Aaron's farm were automatically populating the fields in IrrigWeb required to schedule irrigations, that is, the date and the volume of water applied were remotely uploaded making the scheduling process more efficient.

Through this automated process, Aaron can now see how much water was applied in the irrigation event and can therefore make changes to his irrigation management if needed.

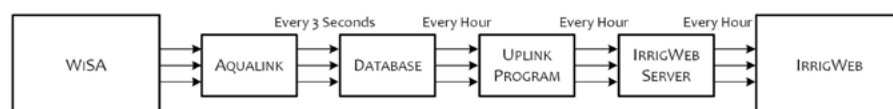
Another benefit of the project is the amount of time Aaron is saving by not having to manually enter each irrigation event into IrrigWeb.

Each furrow field is irrigated between 10 and 20 times over a year, while drip fields may have more than 200 individual irrigation events. Record keeping has become a whole lot easier.

## How does it work?

Every hour, time-stamped irrigation and rainfall data is extracted from the WiSA system through Aqualink and stored on a database.

The program then calculates the amount of irrigation water applied. This data is merged and uploaded into the IrrigWeb's server hourly.



## Auto Irrigation demo:

A demonstration auto-irrigation system, with one WiSA base station, one WiSA hybrid control units, four solenoids, one flow metre and two moisture probes, is set up at JCU community garden (Cairns

campus), which automatically manages the irrigation of four garden beds in the garden. The demonstration farm will also be used to further test the software before conducting on-farms trials.

## The next stage:

In the next stage, the IrrigWeb's generated irrigation schedule will be linked to the WiSA automaton software.

SRA's adoption Officer – Irrigation, Andres Jaramillo, collaborates with AgriTech and JCU on the NESP Project, *Improving water quality for the GBR by better managing irrigation in the sugarcane farming system*. SRA is also member of the Consultative Group set up to track the progress and identify a suitable methodology. ■

## For more information contact:

- Eric Wang (JCU) [eric.wang@jcu.edu.au](mailto:eric.wang@jcu.edu.au) and 0435 733 427
- Stephen Attard (AgriTech Solutions) [steve@agritechsolutions.com.au](mailto:steve@agritechsolutions.com.au) and 0418 155 844

# Policy Update

Industry with Burn Ashburner

Economics with Warren Males

## GM cane and bio-futures

Genetically modified (GM) sugarcane and what are now termed bio-futures have been considered important to the industry for a long time.

While it's true that growers have seen very little benefit from either GM or bio-futures to date, they have been incorporated into the long-term strategic plan for the industry.

GM cane is already a reality, but to take it to a stage where it's grown and the sugar is marketed is complex and costly.

GM cane is here in strictly controlled trials and we could potentially be ready to have it regulated in Australia and grown commercially in the next few years.

We would also need to meet the regulations of the countries we export to and then take the chance that our customers will buy it.

Before starting down that long and complex road, industry needs to be certain that growers will see the benefit and plant GM cane.

Technology is also changing, so we could be overtaken by new techniques like gene editing and not introducing a new gene. As I said, it is complex and it is fraught with risk.

Sugarcane is a very efficient producer of biomass and, strategically, bio-futures have been held up as a potential saviour of the industry.

There has already been some industry investment in bio-futures projects (ethanol and cogeneration), but government policy, markets, technology and feedstock supply all need to continue developing and align to provide a clear and viable opportunity.

Raw sugar profitability is being squeezed for growers and millers, and therefore it seems logical that the industry as a whole needs to determine how to take advantage of bio-futures for the survival of all. Another complex issue!

CANEGROWERS continues to grapple with a strategy for growers and the industry to benefit from GM cane and bio-futures. There is light at the end of the tunnel and although it seems far away I think it is getting brighter. ■



## Trade deals are big deals

Two trade items have captured media attention this month. First was news of Australia signing a free trade agreement (FTA) with Peru. Then came news from Vietnam that the 11 remaining members of the Trans-Pacific Partnership (TPP) agreed on the core elements needed to bring the regional trade agreement into force without the USA.

The Peru FTA, an agreement with one of the fastest growing economies in Latin America, sends a clear message that sensitive commodities, such as sugar, which have been excluded from some past Australian trade agreements can and should be included.

The TPP came close to being finalised, with Trade Ministers agreeing to recommend the deal to TPP leaders.

Recent trade deals have delivered significant benefits for the Australian sugar industry.

- The Japan Australia Economic Partnership Agreement (JA-EPA) opened the door for higher pol Australian sugar to enter Japan. This trade will become even more attractive once the TPP-11 is in place.
- The Korea Australia FTA, removing a tariff disadvantage, improved the terms of trade for Australian raw sugar exports to Korea.
- The recent agreement between Indonesia and Australia eliminated the prohibitive non-ASEAN tariff disadvantage Australian sugar faced on sales to those Indonesian refineries that did not enjoy duty free import status.

Japanese refiners like higher pol Australian sugar. So too do Indonesian and Korean refiners.

Australia lost almost one million tonnes of trade to Indonesia when the tariff differential was introduced. It's early days, but the new tariff structure has already seen some of this trade return.

Including sugar in trade deals is a big deal.

Trade deals and open markets increase exporter options available for Australian sugar. With refiners in Japan, Korea, Indonesia and Peru vying with each other for Australian raw sugar, we should see increased demand.

This strengthens export returns, enhances cane prices and increases our industry's vibrancy. ■





# Growers recognised for outstanding efforts to safeguard the Reef



Queensland cane growers are finalists in this year's Reef Alliance Awards, which celebrate the outstanding achievements of individuals who have participated in the government-funded reef programs.

**Gary and Angela Spotswood** of the Burdekin are finalists in the Reef Conservation category, while **Chris Russo** from the Childers region is a finalist in the Reef Nutrient Management category.

Mackay grower **Tony Bugeja** is a finalist for the Prince of Wales Environmental Leadership – Reef Sustainability Award.



"These are outstanding farmers in a very motivated industry showing what they are doing to safeguard water quality for the future of the Great Barrier Reef," CANEGROWERS CEO **Dan Galligan** said.

"These growers have not only embraced the Federal Government's Reef Programme and/or Reef Trust initiatives, as have hundreds of growers, but they pushed themselves further to become leaders and examples of best practice.

"Special mention must also go to **Deb Telford** of CANEGROWERS Innisfail who is a finalist for the Reef Extension Officers Award," Mr Galligan said.

"Among other things, Deb is her Wet Tropics district's Smartcane BMP facilitator and has helped the owners of 40% of that cane growing region achieve accreditation in the three water quality modules of this industry best practice program."



Across the Queensland industry, 70% of the cane area is benchmarked in Smartcane BMP and 15% has been accredited as being farmed at or above industry best practice via an independent assessment process.

"The level of engagement and commitment by the farmers in our industry is growing and their farms and the environment beyond their boundaries are seeing the benefits," Mr Galligan said.

"Where regulation imposes and embeds a minimum standard, programs such as Smartcane BMP, backed by industry, promote continual improvement for sustainability, productivity and profitability outcomes."



CANEGROWERS calls on the candidates standing at the 2017 State Election to recognise that Smartcane BMP, and not regulation, as the most enduring way for the sugarcane industry to meet expectations and obligations around water quality for the Great Barrier Reef.

The farming organisation is seeking a commitment of \$7.2 million over the next four years to continue the program. ■

Details of all finalists for this year's Reef Alliance Awards are on the Queensland Farmers' Federation website: [www.qff.org.au/blog/reef-alliance-award-2017-finalists-announced/](http://www.qff.org.au/blog/reef-alliance-award-2017-finalists-announced/)



*Pictured (top to bottom): Burdekin grower Gary Spotswood with son Daniel; Isis grower Chris Russo; Tony Bugeja, a fully accredited Smartcane BMP grower in Mackay; BMP Facilitator, Debra Telford.*

## Audit to spark energy savings



QSL hopes to secure significant energy savings throughout the entire bulk sugar terminal network, following its recent selection to participate in a State Government energy initiative.

Bundaberg Bulk Sugar Terminal will be the site of a free and extensive energy audit under the Large Customer Adjustment Program, which aims to help large electricity customers in regional Queensland reduce their electricity bills and more efficiently use energy.

*"This really is a fantastic opportunity to get more 'bang for our buck' in the energy space."*

QSL General Manager Operations Damian Ziebarth said that while the independent audit would focus on the Bundaberg terminal, the QSL Operations team and terminal owners Sugar Terminals Limited (STL) were keen to replicate key learnings throughout the entire Queensland bulk sugar terminal network.

"The audit will provide comprehensive advice on energy management strategies and the standard electricity tariff best suited to the terminal's needs and circumstances," he said.

"We're particularly keen to assess the potential benefits associated with new-generation standby equipment."

Mr Ziebarth said that there was also the potential to tap into a 50% co-contribution from the State Government (up to \$250,000) to implement the audit recommendations.

"This really is a fantastic opportunity to get more 'bang for our buck' in the energy space."

STL Chief Executive Officer John Warda praised the efficiency initiative.

"We'll work closely with QSL to evaluate long-term strategies to curb rising energy costs and make our operations more efficient," he said.

"With our energy bill well over \$2.5 million per annum across our network, it is important that we find solutions to reduce these costs for the benefit of our customers and growers." ■

*Pictured: QSL and STL are keen to apply any learnings from an independent energy audit of the Bundaberg Bulk Sugar Terminal across the wider terminal network.*

### DISCLAIMER:

*This report contains information of a general or summary nature. While all care is taken in the preparation of this report, the reliability, accuracy or completeness of the information provided in the document is not guaranteed. QSL does not accept any responsibility to any person for the decisions and actions taken by that person with respect to any of the information contained in this report.*



# 2018 Season – Why Choose QSL?



MSF Sugar Growers who wish to access QSL pricing and marketing services for the 2018 Season must nominate QSL as their GEI Sugar Marketer by **29 December 2017**.



## NEW FOR 2018

### > IMPROVED PRICING PRODUCTS

We've improved our Grower-Managed pricing options to give you longer to price, more flexibility through smaller pricing increments and the ability to roll pricing forward.

### > MORE PAYMENT OPTIONS

Whether you want a guaranteed minimum return, Standard Advances or Accelerated Advances, we offer a range of payment options designed to support the needs of your business.

### > MORE DETAILED REPORTING

There's no hidden charges, with all costs included in your Shared Pool allocation and detailed in the expanded pool reporting section of our website.

### > LOYALTY PAYS OFF

Nominate QSL as your GEI Sugar Marketer for three years forward and you'll receive a Loyalty Bonus, incorporating a Shared Services Rebate and Supplementary Commitment Premium.

## QSL'S CONTINUING PROMISE TO YOU



### 1. Owned by you, focused on you

QSL does not pursue our own commercial interests above those of the industry we serve.



### 2. Passing on the value

QSL is an income-tax exempt, pass-through industry service organisation. That means we pass on all net value created and don't 'clip the ticket'.



### 3. Multiple pricing options

Whether you want to make your own forward pricing decisions or prefer a managed pool, we offer a varied range of products for you to choose from.



### 4. Experienced professionals

Our Queensland-based marketing and pricing team leverages a range of global partnerships to serve our Members and their interests.



### 5. Above and beyond

Your dedicated QSL Grower Services representative is available to provide support and information when you need it.

# IRRIGATION OPTIMIZATION: THE SECRET TO SUCCESS FOR GREENSILL FARMING GROUP

By Wayne Griffin

If yield is the measure of a good cane grower, then the Bundaberg/Isis region's Greensill Farming Group must be up there with the best. In a area that typically averages 80-90 tonnes of cane per hectare, Greensill Farming is cutting almost double that figure, achieving up to 150 tonnes.

What's the secret? According to **Peter Greensill**, who co-owns the family business with his brothers **Andrew** and **Lex**, it's a simple matter of chemistry and arithmetic.

"It's not rocket science - sunshine, water, reasonable nutrition - done! It's a pretty simple formula to follow," Peter said, when *Australian Canegrower* visited

the family's newest farm in Wallaville recently.

"As farmers we sometimes like to think it's all a bit magical, but it's just chemistry and a bit of mathematics really."

Of course, the reality is a little more complicated. In fact, when it comes to farming, the Greensill family definitely

do things differently to many of their neighbours.

For a start, they do things on a much bigger scale, farming around 2,000 hectares across four farms in the Bundaberg/Isis region.

As well as being one of the district's biggest growers, cutting up to 120,000 tonnes of cane a year, they are also a significant part of Australia's sweet potato supply, exporting throughout the Asia-Pacific region and supplying supermarkets and green grocers nationally.

And that's not all.

Unlike many local growers, who favour legumes like chickpea or peanut as fallow crops, Greensill farms go with watermelons for their rotation, and are a major supplier to supermarkets nationally across the summer months.







*“When we bought the farm it was costing us \$180 a megalitre to lift water out of the river. We’ve now got that cost down to \$43 a megalitre.”*

It's a massive operation, employing over 100 full-time staff and 40 seasonal workers.

There's even a full workshop to service the businesses fleet of farm machinery.

The brothers have their own specific talents. Peter, as CEO of Greensill Farming Group, heads up the family farming operation, while Lex, operating out of the UK, is CEO and founder of the international supply chain finance provider, Greensill Capital.

Andrew Greensill, working alongside Peter in the farming operation, is focused on the earth moving and land development side of the business and continual improvement of the family's farming systems.

But the biggest difference between Greensill farms and their neighbours is not size, crop choice, or even tonnage - it's the farm's irrigation system.

*Continues page 16*



*Pictured: Peter Greensill, who co-owns the Greensill Farming Group with his brothers Lex and Andrew, is a big believer in restoring uncultivated land to its natural state and providing wildlife corridors for native species.*

*Greensill farms operates a high efficiency furrow irrigation system.*

*The Greensill brothers believe in supporting the local economy, so as well as employing over 100 locals, they have also purchased an Australian made Canetec harvester and Greaves ACE Transporter.*





Greensill farms operates a high efficiency furrow irrigation system, something quite uncommon in the Isis district, focused on reticulation, reduction of chemical and nutrient run-off and overall water efficiency.

The family's Stuarts Farm at Wallaville, 40 minutes west of Bundaberg, is a perfect example.

"This is a new property for us, we only bought it in February," Peter said. "It's a 565 ha block and we'll end up with just under 300 ha of cultivation.

"We put a lot of time into designing the farm to maximise efficiencies now and into the future. We start out with aerial height data, known as LIDAR data, which gives a snapshot of height variations across the farm. From here, we do the sums on maximising cultivation area and what that looks like, which then leads us to the final land development plan.

"At that point we start to layer that data up and create the surface that we're going to finish with in terms of drainage, soil types and managing run-off including flood water.

"Once we've got that, we overlay a complete irrigation system. We design all our own pumps and pipeline infrastructure - looking at best practice and reducing losses around both energy and water.

"A lot of the region runs with 6 or 8 inch pipe, but we're using 12 and 15 inch. We've basically just upsized everything to get those losses out and try to get our energy costs down."

It's a system that has already resulted in massive savings on the family's other cane farms, Peter said.

"When we bought the Lagoon Park farm, which is one of the first ones we did out here, it was costing us \$180 a megalitre to lift water out of the river.

"But through switching to flood irrigation and changing pipes and pumps, and getting everything sized correctly, we've now got that cost down to \$43 per M/L. So there's a massive difference there between start and finish, and that's all down to having the right pipelines and pumps."

The brothers use high pressure irrigators for germinating the crop and irrigating pre-emergence, but from that point on it's furrow irrigation all the way.

When pressed on the secret of their cane growing success, Peter admits the ability to get large quantities of water to the cane when required plays a massive part in the farm's impressive yields.

"The district average is around 80 – 95 tonnes per hectare, but this year, and it's been a pretty dry season, we've been cutting 130 tonnes to the hectare. Last year was even better, we were getting around 150, so that's almost double the average," Peter said.

"It's the ability to put the right amount of water at the right time that really allows us to improve yield. Without flood irrigation this would be extremely difficult to achieve.

"The key is trying to match crop demand with water application. If you lose 8 mm a day from the soil, you need to put 8 mm back on, it's that's simple.

"Your soil will have a certain amount of buffering capability, depending on the quality of the soil. A good soil like we have

here might hold 100 mm, but a poorer soil might only hold 40 mm.

"So, if you're losing 8 mm and you're only putting 3 mm on, it goes backwards every day. Your soil only had 40 mm to start with so in eight days, or probably even less, you're in trouble.

"Basically, we want to make sure we can apply water as fast as it's coming off the field. If you can do that the crop is very capable of 150+ tonnes to the hectare."

Like all growers, good yields and lower costs factor highly in the family's thinking when planning their farming operations.

But they are also big believers stewardship of the land and reducing the farm's environmental footprint as much as possible.

For this reason Greensill Farming is well advanced in the Smartcane BMP process, with marketing manager, **Robert Doyle**, expecting the company to achieve accreditation in 2018.

"As a significant Australian cane growing business, Greensill Sugar is committed to implementing the Smartcane BMP program," Robert said.

"Many of the program requirements, including metered irrigation pumps, tail water recycling, farm maps, nutrient management plans, fertiliser, spray and harvest diaries, are already in place.

"The BMP framework and checklist has been established with assistance from the extension officers at Isis Productivity Limited and an on-farm audit is planned for the 2018 autumn, ahead of the crushing season."

The business also sticks to a strict nutrient management plan, ensuring as





*"It's the ability to put the right amount of water at the right time that really allows us to improve yield. Without flood irrigation this would be extremely difficult to achieve."*

little nitrogen as possible is lost to the environment, Peter said.

"We apply mill mud quite religiously, particularly on these development blocks, once we've finished our earthworks and improvements.

"Isis Mill delivers a large volume of mill mud on a regular basis. We've got a manure spreader that we brought over from the UK that we use to spread it each day, broadcasting to improve the moisture holding capabilities of the soil. It also has a broad range of nutritional values which we find is a helpful amendment for the ongoing health of the soil.

"We do soil testing across all the farms every year and we'll apply nutrients to the soil test, so we're not just shoving it on because that's what we've always done it.

"And even where we're using mill mud, that will be part of the nutrient budget. Say there's 35 units of N in the mill mud and 100 units of P, we will then obviously subtract that from whatever we would have put on."

The company's farms are also completely controlled traffic, with the entire Greensill farming fleet fitted out with GPS. And, despite being flood irrigated, they don't burn.

"All of our cane is harvested green and we maintain the trash blanket too," Peter said.

"We rake every second row so that we can get water down the row, but still hold onto the trash."

At the Stuart Farm, Greensill has earth moving equipment working 24 hours a day, levelling land, digging drainage and ensuring the 300 ha of cultivation land matches the brothers' vision.

However, work is also ongoing on the remaining 250+ ha of uncultivated land, where the business is engaging in the regeneration of natural vegetation and riparian work.

"It was something we wanted to do off our own bat," Peter said.

"Since purchasing our new farms we've done a large amount of earthworks and land development, but there's also large areas we're not going to farm. The intention is to replant and create a number of wildlife corridors in these areas to support the environment.

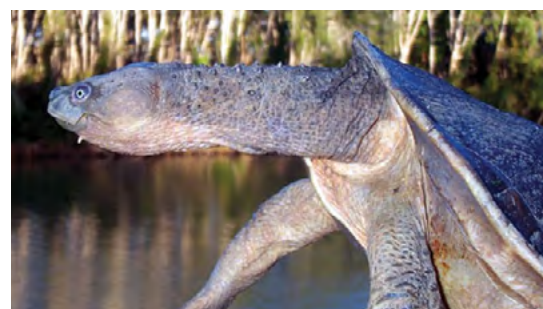
"It's a fact of life that you have to clear some land for farming, but as legal as it is to do, it's not something we just do for sport. Where we can regenerate and support the land and environment that supports our business, we will always do that.

"I believe it's a bit of a circular process, the good we can do for the land and environment will hopefully come back and pay off in the end."

The regeneration project has also led to an unexpected discovery at the Wallaville property.

After teaming up with Landcare to carry out some riparian revegetation work on the creek banks, workers discovered the critically endangered White Throated Snapping Turtle living in the Laufer's Bend Creek, a tributary of the Burnett River which runs alongside the property.

"It was a bit of a surprise to be honest," Peter said. "But it has just strengthened our resolve to carry out that revegetation and restoration work and make sure we continue to do our bit to care for the land as much as possible."



*Pictured: Greensill Farming imported a manure spreader from the UK specifically to spread mill mud.*

*Earthmoving equipment operates 24hrs a day at the Wallaville farm.*

*The critically endangered White Throated Snapping Turtle has been discovered at the company's Wallaville property.*



**Matt Kealley**

CANEGROWERS Manager -  
Environment & Sustainability

*"Using fertiliser effectively and keeping it on the farm, in the crop and out of creeks, benefits both water quality and the business bottom-line."*

## In sugarcane farming, the environment and economics do line up

The Great Barrier Reef 2016 Reef Report Card was released on 27 October 2017. CANEGROWERS has welcomed its finding of progress towards targets for nutrient, chemical and sediment run-off.

CANEGROWERS' message to our sugarcane farming members is to hold your heads high, you are doing good work.

The high levels of engagement in government reef programs and the involvement of 70% of Queensland's cane farming area in the industry best practice program, Smartcane BMP, show that growers are working to care for the environment, while also improving productivity and profitability.

The report card recorded moderate progress in sediment and pesticide reduction against the 20% target by 2018, with the greatest annual reductions in pesticides coming from the Wet Tropics region (4.8%).

This was due to increased adoption of band spraying for residual herbicides, and decreased use of residual herbicides in ratoon cane crops.

While the Dissolved Inorganic Nitrogen (DIN) target showed very poor progress, the estimated annual average DIN load leaving catchments reduced by 20.9% at June 2016.

A significant contributor to this was an annual reduction of 5.5% in the Burdekin region, which was directly attributable to the RP20C Burdekin Nitrogen Project.

This project, funded by the Queensland Government, aimed to provide evidence supporting the industry standard for nitrogen application—Six Easy Steps.

Sugar Research Australia facilitated the delivery of the project and engaged with 23 farmers (managing 12,721 hectares) who achieved an annual reduction of 499 tonnes of nitrogen (an average reduction of 39 kg/ha).

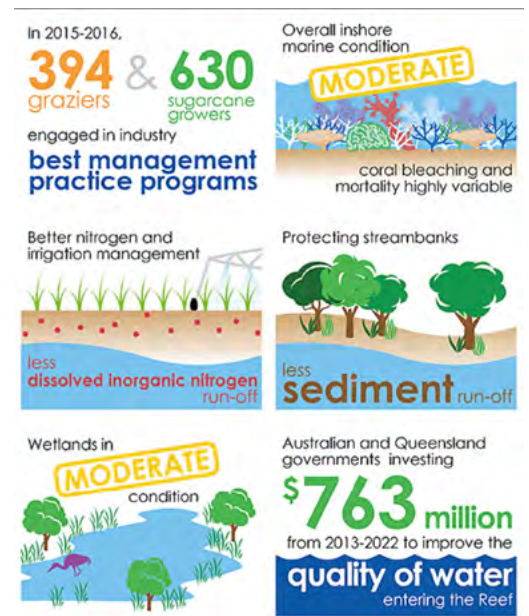
Using Six Easy Steps resulted in improved water quality and, importantly, recognition from the Queensland Government Minister

for the Great Barrier Reef Steven Miles who said in a statement, "These trials proved the industry standard maintains grower productivity and maximises their profitability while producing a fantastic outcome for the Great Barrier Reef".

In sugarcane farming, the environment and economics do line up. Using fertiliser effectively and keeping it on the farm, in the crop and out of creeks, benefits both water quality and the business bottom-line.

The Great Barrier Reef 2016 Reef Report Card is here:

[www.reefplan.qld.gov.au/measuring-success/report-cards/2016/assets/report-card-2016-detailed-results.pdf](http://www.reefplan.qld.gov.au/measuring-success/report-cards/2016/assets/report-card-2016-detailed-results.pdf) ■





# Cash on offer for innovative ideas

The Australian Government recently announced the Smart Farms Small Grants initiative, which provides funding to the tune of \$50 million to agricultural industries.

This funding is provided under the National Landcare Program and growers can directly apply for grants of between \$5,000 and \$100,000.

CANEGROWERS has welcomed the announcement and encourages growers to apply.

The funding is to develop and extend new tools, methods and technology so growers can continue to be at the forefront of land management and increase on-farm productivity.

Supported projects will improve soils, vegetation and biodiversity, and support farming communities to increase awareness, knowledge, skills and capacity to adopt best management practices.

To be eligible, growers will need to demonstrate how their project will

deliver sustainable and improved outcomes in key areas: on-farm soil, vegetation and biodiversity.

Furthermore, activities must contribute to one or more of the following:

- Soil health
- Conserving or restoring native biodiversity
- Climate change adaption
- Greenhouse gas emissions management and resource efficiency
- Sustainable agriculture and natural resource management (that supports any of the above)

"This is a fantastic opportunity for growers to access funds to make improvements and stay innovative with their farming practices,"

CANEGROWERS Policy Officer Dean Pickett said.

"One of the most exciting things about this opportunity is that growers from all regions can get involved.

"Grant applications can be a bit daunting if you haven't completed one before and there is a lot to consider when writing your application.

"If any growers have an idea, but need some advice or assistance with the application process, I'm happy to help in anyway I can."

Applications close at 2pm AEDT, 7 December 2017.

For further information contact Dean on 07 3864 6470 or visit: [www.nrm.gov.au/national-landcare-program](http://www.nrm.gov.au/national-landcare-program) ■



# Muzzling the black dog – Justin's story

By Sonia Ball

Justin Vella knows how important it is to break down the stigma around mental health for those working in the agriculture industry. The 39-year-old harvester parts specialist lost his marriage and almost lost his life while working 120 hours-a-week to feed his family and keep his cane growing business afloat.

Silently battling depression and anxiety, Justin's world finally came crashing down when he suffered a stroke three years ago.

His doctor advised him to change his lifestyle – "get out or die – it's one or the other".

He decided to get out, and now runs his Mackay-based spare parts business while keeping his mental and physical health at the forefront of his mind.

Justin says that had he had known how to access appropriate counselling and information on managing mental illness and anxiety at the time, he may have been able to care for his physical and mental health earlier, avoiding serious illness and severe anxiety.

He also bravely admits that he considered taking his own life a number of times during these difficult days.

"I'm not embarrassed to say that I've touched on suicide on several occasions, and the only thing that stopped me was my beautiful son, Zachery," Justin said.

"I know now that I should have listened to the people that love me – close friends

and family, because they are the ones who can see exactly what is happening."

Justin's story should be a warning to other farmers and landholders who may be struggling mentally and not speaking out about the issues they're facing.

"My wife eventually left me because all I did for 10 years was work," explains Justin.

"She got sick of me not being home, and I don't blame her. I used to see my parents more often than anyone else because I was in business with them.

"I worked side-by-side with my father a lot, but with my wife and son, sometimes weeks could go past before I would see them.

"Even through the season it was nothing for me to come home late when they were already in bed, and then be gone in the morning while they were still asleep.

"There were nights that I didn't even come home – work was a way I could escape reality."

Justin is now an advocate for cane growers to seek help if they are

doing it tough, especially focusing on rural mental health and rural suicide prevention.

"I've spoken to my psychologist about becoming a rural counsellor for the simple fact that I've sat on all sides of the fence - I know what some farmers are going through," he said.

"My psychologist once asked me how many farmers did I think who would pick up the phone and ask for help? I answered him bluntly... 'none'.

"The biggest problem I think is the age of our average farmer. Most are old-school thinking, in that a person is weak if they can't handle their problems.

"That's what a lot of them think – you're not a man if you show emotion and tell people your feelings, and that you must be weak. Men shouldn't cry," Justin said.

"So, they just suppress it and bottle it up until it's all too much."

Justin has strong advice for farmers who are not sure whether to seek help or not.

"Don't be afraid to talk, you're not weak if you're struggling," he said.

*"I'm not embarrassed to say that I've touched on suicide on several occasions, and the only thing that stopped me was my beautiful son, Zachery."*



Justin Vella with son Zachery, partner Simone and her son Jackson.



*"A lot of them think – you're not a man if you show emotion and tell people your feelings, and that you must be weak. Men shouldn't cry. So, they just suppress it and bottle it up until it's all too much."*

"You have to talk to people, and it is ok to cry."

He said medication may help some people in the short-term, but it was 'only putting a 'band aid over the sore'.

"Anyone that gets prescribed medication in these situations should be referred to a psychologist or, at the very least, get some sort of therapy or counselling. You have to know where the core problem lies so it can be fixed," he said.

"For years I'd get crook and doctors would just double my medication, then triple it if I wasn't getting any better –for me, that didn't help at all.

"You need to get to the core problem and talk about it – you can only bottle it up for so long," he said.

"Sometimes it just takes a bloody good woman to put her wife pants and boots on to tell you you're crook, and 'come on, I'll take you to the doctor'."

Justin warned cane growers to look out for the triggers that could set them on a downward spiral.

"It could be losing a family member, a bad drought, it can be bad prices, and in fact a lot of it comes back to finances," he said.

"When prices are down and you've got droughts, you find that one thing just goes on top of the other and it keeps snowballing.

"It'll be stress caused by the drought, and then you haven't got a crop and you're trying to keep animals alive.

"It comes to the point where you have to start shooting the animals. These are very big things to deal with when it's your livelihood, and your family depends on you."

Justin said alcohol was one of the main things to avoid in these circumstances.

"Drinking is self-medicating, it doesn't fix anything and it makes you feel worse – that's why I don't drink.

"Not being able to afford extra help on the farm can also put farmers at greater risk of depression and associated mental health issues.

"When all of the responsibility is on you to keep things going, there is a lot of pressure and often you're working around the clock and burning yourself out," he said.

"When it comes to this, it's time to go and see a doctor or talk to someone, and you can even try other strategies to care for yourself, like meditation.

"I always thought meditation was just for hippies, but I meditate now, and I sleep much better."

Justin's message to other farmers is simple – 'don't think you're weak if you're struggling, and please ask for help'.

"What you don't realise when you are thinking and talking about suicide is the amount of heartache you leave behind.

"Often children are involved and the effect this would have on them is heart-breaking, not to mention other family and friends.

"At the end of the day, life insurance doesn't pay for suicide.

"All you're really going to achieve is passing on the worry and debt to your family – you need to be well to get through the tough times together.

"Your family would much rather have you, than the farm or any dollars."

Justin said he was telling his story to help others to break the mould and start talking about their problems.

"If by telling my story I can help just one person, it will all be worth it."

After nearly three years struggling to get on top of the depression, Justin is now living a happy life with a sustainable work-leisure balance.

He says meditation and exercise help him to maintain a healthy, wholesome life.

With this new balance Justin can enjoy more time with his son, partner Simone and Jackson as well as other family and friends.

"The happiness in life I have today makes the long journey for the past three years well worthwhile," Justin said.

"Simone also has been very understanding and the biggest support to me, and this has meant that I have not had to travel this road alone." ■

## Where can I get help 24/7?

- For assistance call your GP or Queensland Health: **1300 642 255**
- Lifeline: **13 11 14**
- Beyond Blue: **1300 22 4636**
- Mensline Australia: **1300 789 978**

There is also a comprehensive list of support contacts and resources (suicide prevention and information) on the Grapevine website at [www.grapevine.com.au](http://www.grapevine.com.au)

**IF LIFE IS IN DANGER CALL 000**

# Sustainable food & eco-eating tips

By the Australian Sugar Industry Alliance Nutrition Team.



*The food we eat can make a difference to the health of the planet, as well as our own health and wellbeing.*

## Food and the environment

The food we eat has a significant impact on the environment. Whether it is the land, water and fertiliser used, or the greenhouse gases produced through the production, processing, packaging, transportation and waste disposal, it all contributes to our eco-footprint (ecological impact).

## What is sustainable food?

Sustainable food uses resources to meet our present food needs without compromising the ability of future generations to meet theirs. For example, sustainable seafood has been caught by a responsible fishery in a way that ensures healthy oceans and safeguards seafood supplies for the future. Food imported by air is less sustainable because aircrafts generate a lot of greenhouse gas pollution.

## Carbon footprint

Our carbon footprint is how much greenhouse gas is produced as a result of how we live. The food we choose is a great place to start in trying to minimise

our impact. Foods that are seasonal, locally produced, minimally processed and plant-based tend to have the smallest carbon footprint. Minimising car travel and using less energy in our homes is also helpful.

## Plant power

Animal foods such as red meat are nutritious, but they come at a bigger environmental cost. Eat just enough to be healthy but don't overdo it. In practice, enjoy modest portions of meat and fill your plate with plant foods like wholegrains and vegetables (your body will thank you). Embrace the 'meat-free Monday' trend and experiment with pulses and legumes (soy beans, chick peas, lentils and kidney beans), nuts and seeds.

## Highly processed foods

For our health, we need to eat less highly processed foods high in kilojoules and low in nutrients. Highly processed foods require more of our Earth's resources to produce, so eating fewer 'sometimes foods' is a win-win for us and the planet.

## Minimise packaging

Buying food with less packaging helps reduce the use of resources, and reduces rubbish in landfill. A simple way to do this is to drink water from the tap rather than buy bottled water, or buy food in larger amounts rather than individually wrapped portions. Recycle packaging wherever possible. Take your own bags to the shops rather than using plastic bags. Plastic relies on fossil fuels, takes ages to decompose in landfill and pollutes our land and oceans.

Encouraging and supporting breastfeeding is also good for the environment because it requires no processing or packaging at all.

## Waste not

We are a wasteful lot; Australians throw out one out of every five bags of groceries. Not only does this waste money, but all the precious resources required to produce the food are also lost. The food we throw into landfill also produces large amounts of methane, a potent greenhouse gas. ■



## FIRST 5 LINES FREE\* FOR CANEGROWERS MEMBERS!

Book online anytime of the day or night at [www.canegrowers.com.au](http://www.canegrowers.com.au) or email us at [ads@CANEGROWERS.com.au](mailto:ads@CANEGROWERS.com.au)

Next deadline is **27 November 2017**.

\* As a FREE service to CANEGROWERS members, *Australian Canegrower* will print suitable classified advertisements **UP TO 5 LINES FREE, FOR ONE ISSUE ONLY**. A charge of \$5.50 will apply for each extra line or part thereof. A charge will apply for advertising of non-cane growing activities. Advertisements must relate exclusively to cane farming activities, e.g. farm machinery etc. Advertisements from non-members are charged at \$11 per line incl GST. Only pre-paid ads will be accepted.

## Beaulieu R.U.M.

### Attention Canegrowers

The first step in achieving a high yielding cane crop is a good strike and vigorous growth in the early stage of your crop.

**This can be achieved easily by simply adding 5 litres of R.U.M per acre to your dip water.**

**For a cost of around \$25 per acre  
Can you afford not to give it a go?**

For further information contact –

Burdekin & Northern Region call Wally Ford 0417 937 722  
Mackay Region call Noel Jensen 0438 595 325  
Childers Region call Peter Irwin 0428 427 212

**GREAT BARRIER  
REEF FRIENDLY**

Do you want a **FREE** electronic version of *Australian Canegrower* delivered to your email inbox every fortnight?

To receive your free electronic copy, email us on: [editor@CANEGROWERS.com.au](mailto:editor@CANEGROWERS.com.au)



## Neil's Parts Australia

**HIGH QUALITY TRACTOR PARTS**

# 1800 463 457

AH 0417 662 137, 0408 735 148  
[www.neils.com.au](http://www.neils.com.au)

## Graham Twyford Machinery Sales Pty Ltd

Specialising in Used Cane Harvesting Equipment Sales

**2006 CASE 7700 Track Harvester.**  
350 HP Iveco engine. STD Topper, 15"x 8 blade chopper. D5 type tracks as new. Well maintained machine.

**CUMMINS QSL 8.9L Eng.**  
325 HP @ 1900 RPM. 750 Hrs.

**NEW ! BILLET PLANTER 2500**  
Rubber belt cane feed, Immediate Delivery. In Mackay NOW.

**New 18" curved GROUSER PLATES**  
Suit D5 Case 8800 type chain, full set.

**Used 10,000 series**  
CHAR-LYNN MOTORS 40 cubic inch.

**Used 2 x 6,000 series**  
CHAR-LYNN MOTORS 60 cubic inch.

**WHOLE TOPPERS 2 x CASE**  
as new one is complete.

**OMNITRAC Full Track walking gear**  
complete with 24" rubber belts. Hi-Track drive. 5 roller suit Case or JD.

**USED BIG ERNIE or walk down front roller**  
suit Case or JD as used in NSW.

**Used D4 Track Rollers**  
double flange three quarter bolts.

**NEW ! 4 SLAT OPEN BUTT ROLLERS**  
Suit JD 3510/20 and CASE. Helps Drop Dirt. Enquire NOW!

**HARVESTER PARTS CAMECO 1996.**  
Crop lifters, 8 blade diff chopper drums, various hydraulic valves and hydraulic motors.

**IN STOCK NOW — 12, 10, 8 & 6 blade DIFFERENTIAL CHOPPER DRUMS,**  
suit '05 Cameco to JD 570.  
Tungsten hard faced on wear areas.  
New seal plates, clamping bars & dowels with kit.

**Graham Twyford**  
48 Central Park Drive, Paget, Mackay  
Mobile: +61 (0) 418 742 696  
[graham@gtmachinerysales.com.au](mailto:graham@gtmachinerysales.com.au)  
[www.gtmachinerysales.com.au](http://www.gtmachinerysales.com.au)

WANT MORE NEWS, VIEWS  
AND PHOTOS?

Find CANEGROWERS on Facebook!  
[www.facebook.com/CANEGROWERSAustralia](http://www.facebook.com/CANEGROWERSAustralia)

## Classifieds

### Mossman-Tully

98 Cameco CHW 2500, VGC, Westhill Half Tracks, POA. Mulgrave Area: 0407 183 680

Quick-Hitch to suit John Deere tractors (as new). 3 Row Board/Rinaudo Canecleaners with Fertiliser Boxes. Ph. 0400 634 141

International 986 150hp reasonable condition good working order. Tully area \$5000 inc GST Ph. 0419 651 000

2 x JCB 2135 with 6 Tonne HBM Tipper, Good Condition, \$44,000 each inc GST. Can Separate. Ph. 0437 932 489 or 0427 337 601  
8240 New Holland Ford with or without GPS. New rear tyres with Air-Cab, GC. Ph. 0418 154 557

Kubota 1750 interrow, ready to hook on your spray trailer and go, also equipped with 3 hyd outlets, neat tidy tractor in excellent condition. 0429332731 \$8000 incl gst ono

**\*\*PRICE CORRECTION\*\*** Hi Rise Sprayer G.C. \$50,000 inc gst; HBM Cane Stripper with chain oiler \$2,000 inc gst; 150HP same with 120" Rotary Hoe \$40,000 inc gst ono. Mulgrave area. Ph. 0427 160 771

Breakpusher MF35 tractor. Modified 4000 harvester full track motor 3yrs old. Contact Mob 0401 281 262

### Herbert River-Burdekin

Perkins 354 diesel in C1800 Tipper. 1970 International. Drive away. 2000 plus gst. Ph. 0417 070 844

KMC two row peanut thrasher. Good condition. Ph. 0429 774 607

Cane harvester Rear wheels. Suit Cameco/ John Deere. Bonfiglio and John Deere hubs. Simex. 23.1x26 14 ply. Gripster tread. Reinforced rims with mounting lugs for jockey wheel. \$5500 inc. Also available jockey wheel \$660 inc. Home Hill. 0409 481 269

1998 Mitsubishi Magna Sedan. Unregistered. New Radiator and near new tyres with mags. Ph. 0427 774 141

McLean High lift 5-ton side tipper for wet weather in paddock use. 22x50x26 tyres. Good Condition. Silkwood Plant Cane Trash remover, 3-point linkage, chain driven 2 5-blade fans. Tromel on 4-ton cane bin trailer. 5-furrow Hodge reversible plough. 3-point linkage. Phone 0429 774 607

### Mackay-Proserpine

Miller stone picker with elevator; \$15,000 + GST. Ph. 0419 663 498

Massey Ferguson 6170 4WD in good condition with low hours. Price on application. Ph. 4959 8974

Ditch Witch R100 trenching machine with back hoe attachment. F10 Volvo 10-tonne tipper with tagalong trailer used to transport trencher. Ph. 4959 2260

12T self-propelled 6x6 elev infielder VGC. 6t side/tipper on Leyland tandem GC. Don Mizzi 741 model on Fiat 750 special turbo plus MF102 half-tracks to suit. Mason 9550 4-row precision vacuum seed planter GC. 0438 606 578 (Mackay)

## Rainfall Report

brought to you by AustSafe Super

Location	Recorded rainfall (mm)		Average rainfall (mm)	
	7 days to 9am		January–November	
	06.11.17	13.11.17		
Mossman	15	40	1951	2022
Mareeba AP	2	5	694	806
Cairns	3	61	1622	1821
Mt Sophia	1	171	3116	3069
Babinda	0	62	3173	3933
Innisfail	4	31	2897	3290
Tully	0.9	34	2355	3814
Cardwell	10	30	1800	1922
Lucinda	0	21	1712	1925
Ingham	16	42	1488	1835
Abergowrie	2	79	1206	1632
Townsville	2	1	722	992
Ayr DPI	0	2	863	825
Proserpine	58	43	1467	1211
Mirani	24	34	1260	1333
Mackay	6	34	1910	1382
Sarina (Plane Ck)	8	26	2572	1531
Bundaberg	0	42	1056	885
Childers South	0.2	6	996	769
Maryborough	0	20	888	1026
Tewantin	4	62	1382	1542
Eumundi	0	0	1215	1504
Nambour	5	26	1074	1516
Woongoolba	0	32	935	1202
Murwillumbah	4	34	1472	1413
Ballina	98	87	1791	1632
Woodburn	71	32	1628	1250

### JOHNNY FARMING COMPANY

#### New Hydraulic Heavy Duty

#### OFFSETS

3 metre width, 28 discs,  
All bath bearings

\$11,000 plus GST (\$12,100 incl GST)

Other size offsets available are 1.8m, 2.2m,  
2.5m, 3m & 3.4metres.

3 point linkage offsets available also



#### New Heavy Duty

#### SLASHERS

2.1 metres width \$3,300 incl GST

Other sizes available are 1.2m, 1.5m & 1.8m

**Johnny Farming Company**

Phone (07) 4952 2577 or 0412 535 887 (John)  
or 0407 638 674 (Andrew)

133 Schmidtke Road Mackay Qld 4740



**AustSafe  
Super**



The industry super  
fund for rural and  
regional Australia

Zero indicates either no rain or no report was sent. These rainfall figures are subject to verification and may be updated later. Weather forecasts, radar and satellite images and other information for the farming community can be accessed on [www.bom.gov.au](http://www.bom.gov.au). Weather report provided by the Bureau of Meteorology's Commercial Weather Services Unit.



Sprayrite Tempo 1200 Spray Tank, Brand New, 1200L Capacity UV resistant tank, 170LPM PTO driven Pump feeding a 5 section electric controlled spray controller, Heavy Duty 3point Linkage carry frame, \$15,200 Inc. 12m or 15m boom and Hyd. Mast can be added. Ph. 0428 236 165

Parts available for Howard AR & AH Rotary Hoes from \$50 to \$500. McLeod slasher 6 foot heavy duty in good condition \$4000. Ph. 4959 5883 or 0407 643 441

Earthmoving tyres brand new 14.00R25, \$550 each. Ph. 0488 300 361

## Bundaberg-Rocky Point

900 x 2.4m concrete pipes. Ph. 0417 193 385  
Bonel trash incorporator fertiliser box, plastic bins, stainless steel worm, good condition. \$12,000 + gst. Universal 445 tractor; HR40 Howard Rotary Hoe 100inch; Marell trash blower; Marell whole stick plant cutter; Town & Country planter. Ph. 0417 617 084

Howard Square Plough (3 row with 4th row extension); MF201 Cane Harvester — good billet cutter; Kubota B70100 inter-row tractor with 3 high row clearance sprayer units (each with 300 litre cap). Ph. 07 4126 1535

Bonel 1 tonne Fertiliser Distributer with coulter & cutaway discs; HBM Billet Planter with Suscon Box — good order; Trailco Travelling Irrigator; 13 x 7m 4" Aluminium AJAX coupling irrigation pipes. Ph. 07 4126 1535

## Wanted

GROUND WATER WANTED to purchase and permanently trade in the Mulgrave Russell Groundwater Zone 1A, 1B, 1C or 1D. Up to 60 megalitres. Please phone Darryl 0417 776 870

Wanted: Toft-case harvester 93 to 00 model wheels or tracks 0400 794 857

Wanted to buy: 4000 litre tank, preferably plastic, may consider steel. Ph. 0458 529 367 or 0438 598 283

Tractor tyres — BUY & SELL. All sizes. Ph. 0418 775 698

CANE WANTED for 2017 and subsequent seasons. Tully area. Shawn Ph. 0418 782 815

## Positions Vacant

Cane person required to live on and manage irrigated cane farm at Mirani. 4br house, close to town and schools. Ph: 0419 654 457

## Property

INGHAM: Cane Farm for sale Hawkins Creek. Total area 48.3ha. CPA 46.6ha. Shed, electricity & water. Genuine enquiries phone John 0407 635 175

Cane farm Tarakan Road Abergowrie 270 acres freehold Genuine enquiries pls phone 4777 4633 or 0408 608 664

Wanted Cane farm up to 30mins from Mackay 5000t +. Genuine buyer 0407 629 940

WANT MORE NEWS, VIEWS  
AND PHOTOS?

Find CANEGROWERS on Facebook!  
[www.facebook.com/CANEGROWERSAustralia](http://www.facebook.com/CANEGROWERSAustralia)



**First Grower accredited  
in three key BMP  
modules!**

**Head over to  
[www.smartcane.com.au](http://www.smartcane.com.au)  
now to read his story...**

**Driven by growers.  
Used by growers.  
Owned by growers**



[www.smartcane.com.au](http://www.smartcane.com.au)



# Spotted anything unusual?

## NOTHING WILL PROTECT YOUR CROP BETTER THAN A GOOD HARD LOOK

Growers have an important role in keeping watch for exotic pests, diseases and weeds that could devastate the Australian sugarcane industry.

Early detection and reporting is the key to protecting farms, industries and the communities that rely on them. Every moment lost harms our chance of successful eradication.

If you spot anything unusual in your crop please call the Exotic Plant Pest Hotline on 1800 084 881. The call is free (except from mobiles).

Visit [phau.com.au/industries/sugarcane](http://phau.com.au/industries/sugarcane) for further information and a list of the top priority cane pests.



**Look, be alert, call an expert**