

CANE

AUSTRALIAN

GROWER

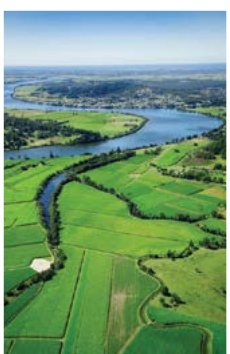


CANEGROWERS

25 March 2019 Price \$9.95

WEEDS AND PESTS

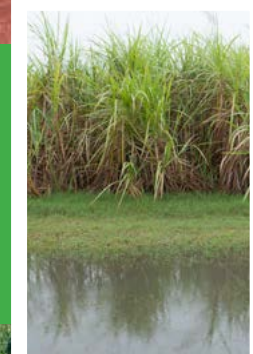
Know your enemies and how best to deal with them



New Reef
regs bill
allows
goal posts
to keep
shifting

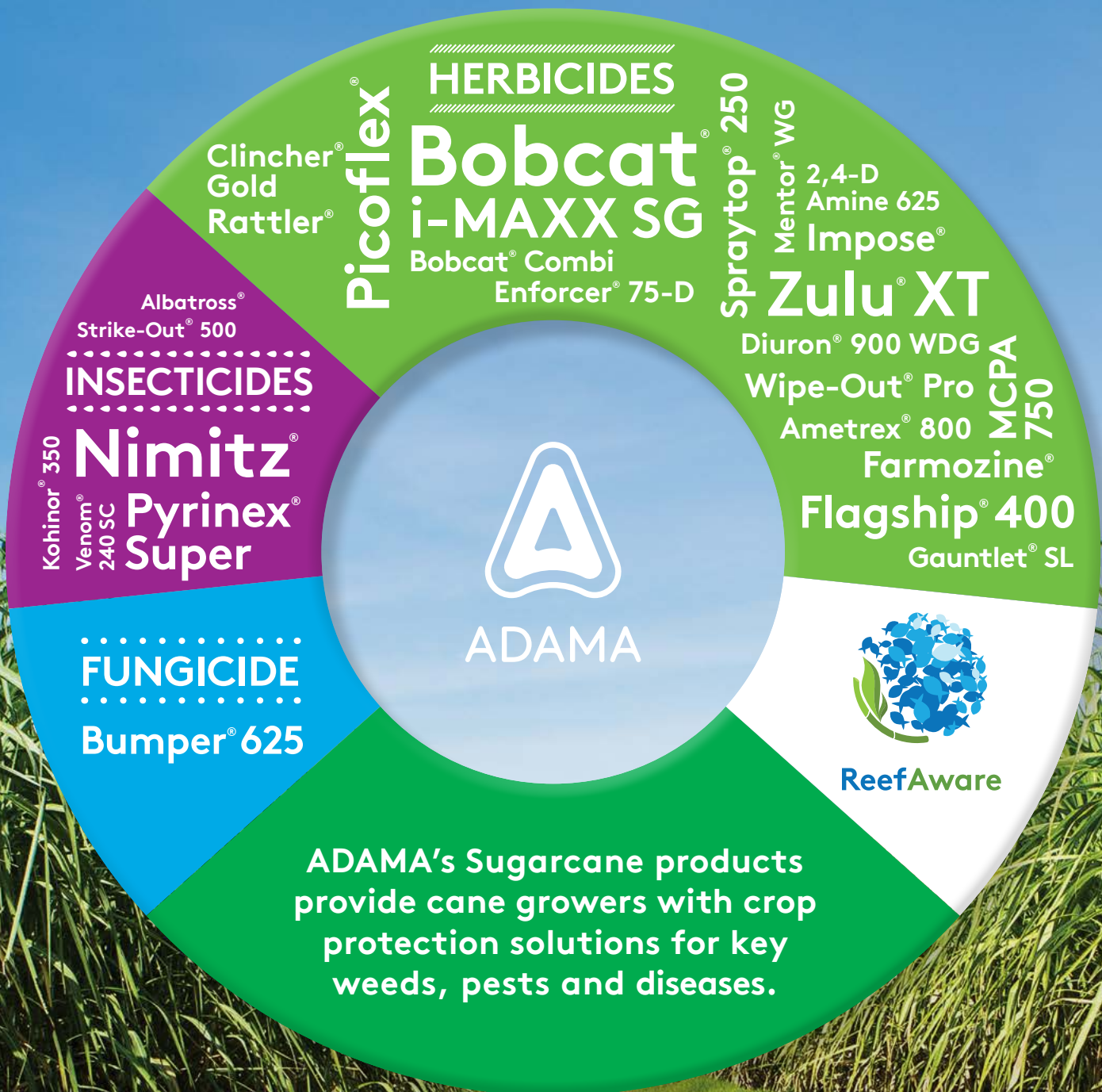


Cane
Changer
funding
enables
southern
expansion



Drainage
issues and
levee banks
a muddy
area for
growers

Year round Sugarcane protection.



Simply. Grow. Together.

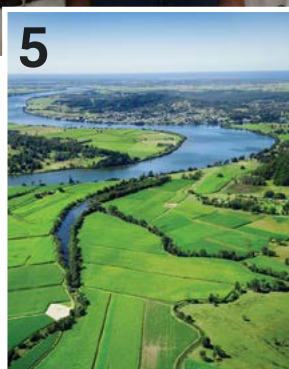
Visit ADAMA.com

Phone 1800 4 ADAMA

Follow us  

CONTENTS

25 March 2019



Features

- 4 Guatemala joins fight over Indian subsidies
- 5 Anger at Reef regs hearing plan
- 6 Time to vote in CANEGROWERS Elections 2019
- 10 Cane farm program receives funds for the future
- 14 SRA Snapshot - new soil health toolbox available online
- 16 Weed management - know your enemy
- 20 Legal: Drainage issues and levee banks

Also inside:

- 2 CEO's comment
- 4 News in brief
- 8 Policy updates
- 12 QSL report
- 22 Classifieds
- 23 Rainfall report

COVER IMAGE: Weeds, pests and diseases cost cane growers millions of dollars each year.

Editor: Wayne Griffin

Design and classifieds: Angela Linhart

Articles appearing in *Australian Canegrower* do not necessarily represent the policies or views of CANEGROWERS

Published every second Monday by
CANEGROWERS

Level 6, 100 Edward Street, Brisbane,

Queensland Australia

ABN 94 089 992 969

Postal Address: GPO Box 1032, Brisbane,

Queensland 4001 Australia

Telephone: 07 3864 6444

Fax: 07 3864 6429

Email: info@CANEGROWERS.com.au

Website: www.CANEGROWERS.com.au

AUSTRALIAN CANEGROWER ISSN 0157-3039

Volume 41 Number 06

Printed by Printcraft

37 College Street, Hamilton QLD 4007

Subscriptions

Yearly subscriptions for 25 issues (postage included)

Within Australia \$160 inc GST

Overseas (AUD) \$250

Short term politics must not deter us from long term sustainability goals

By Dan Galligan, CEO CANEGROWERS

As this magazine went to print, the Queensland Parliamentary Committee set up to review the latest tranche of reef regulation proposals was preparing to consider submissions, including one from CANEGROWERS.

Our industry's opposition to these regulations has been well documented. Unfortunately, given the make-up of Queensland's parliament at present, with a Labor majority government determined to push new regulations through, we may be fighting an uphill battle to stop the Bill. Indeed the Government has shown nothing short of contempt for our sector in allowing almost no time for consultation on the bill.

But, short-term political dynamics aside, as an industry we must continue to look towards our long-term challenges.

This can be difficult, especially as it seems that the work our industry has done to meet sustainability challenges is being ignored here at home.

At an international level it's a very different story! Industries in other countries and global buyers of sugar are queuing up to understand the Australian sugar sustainability story.

Coca-Cola Amatil has recently announced that all of its Australian sugar contracts until 2021 will be sourced from Smartcane BMP or Bonsucro-accredited product.

This is no small feat!

Coke representatives spent many months going through our Smartcane BMP program with a fine-tooth comb before determining that it meets their global sustainability goals – goals driven by consumer demand.

This follows on from Smartcane BMP's alignment with Bonsucro, the international sustainability standard for sugar, which CANEGROWERS obtained in 2016.

These achievements are testament to the rigour of our industry program. They are recognition of the fact that the program is scientifically verified and that accredited growers have been audited by an independent person.

The more accredited growers we have, the stronger our position in the market as sustainable suppliers. It is your commitment that helps CANEGROWERS pursue this recognition.

Across the globe, growers and sugar users want to know about and celebrate what we are doing.

CANEGROWERS Chairman **Paul Schembri** has given presentations on Smartcane BMP to the World

Association of Beet and Cane Growers, and the International Sugar Organisation.

Recently, I was a guest of the American Sugar Refiners Association at the 2019 International Sweetener Colloquium in Miami, where I outlined the sustainability guarantees our program could offer their market.

Earlier this month, CANEGROWERS was represented in Thailand at Bonsucro Global Week where again we explained what Australian growers have achieved.

At that gathering our Cane to Coast website feature, which tells the story of growers adopting improved farm management practices, was awarded a global sustainability communications award.

It is you, the cane growers of Queensland, that have achieved this. You have done this voluntarily and with your eyes on the future of not only the Australian sugar industry, but also the environment in which you live and work, including the Great Barrier Reef.

We cannot let the current political dynamic deter us from this objective or disrupt the significant momentum that you have built, because the industry should be proud of these achievements.

That is why CANEGROWERS will continue to oppose the Queensland Government's move to impose more regulations on the industry – regulations that will add red tape to your busy lives, restrict your business expansion and innovation, and expose your business dealings to bureaucratic scrutiny, all with no guarantees of benefit to the Reef.

We may not win this political battle, but that should not deter us from executing a winning strategy that secures a market for Australian sustainable sugar, built on the back of growers who share a vision for the future of this industry. ■



CANE COUNTRY WE'VE GOT YOU COVERED



ACCESS THE BEST CANE-SPECIFIC COVER ON THE MARKET

Queensland is a beautiful place to live, but it can also be volatile and unpredictable. Making sure you have the right insurance cover is so important.

Get the right cover

CANEGROWERS Insurance brokers have access to a range of insurers to provide you with the most competitive cover.

No fees for members

As a membership service, no broking fees apply for CANEGROWERS members.

We come to you

CANEGROWERS Insurance brokers will visit you on farm to talk over your insurance needs.

Help to lodge claims

If something goes wrong and you need to report a claim, we are here to assist you during the claims process.

Contact your local CANEGROWERS Office to discover how WE CAN HELP YOU!

NEWS IN BRIEF

Guatemala joins fight over Indian subsidies

Central American sugar-producing nation Guatemala has joined Australia and Brazil in lodging a request for consultations in the World Trade Organisation (WTO) over India's dumping of subsidised sugar onto the world market.

"Guatemala's decision to make use of the WTO dispute settlement mechanism is important," Guatemalan Sugar Association's **Leopoldo Bolaños** said.

"Our industries are suffering significant injury as a direct result of India's subsidies and domestic support measures.

"We are confident that a solution can be achieved during the consultations with India or, in any event, that the positions of Australia, Brazil and Guatemala will prevail before a WTO Panel."

Thailand has also signaled its willingness to join the coalition, adding significant international pressure for India to comply with its international trade obligations with respect to sugar.

CANEGROWERS representatives discussed the WTO action with Federal Trade Minister **Simon Birmingham** during a meeting with the Minister, LNP Senate candidate **Susan McDonald** and representatives from QSL and the Australian Sugar Milling Council at CANEGROWERS' Brisbane office earlier this month.

"Minister Birmingham acknowledged the industry's efforts to build an international coalition of support for

the challenge and confirmed Australia's effort to secure India's compliance with its obligations under WTO rules," CANEGROWERS Head of Economics, **Warren Males**, said.

CANEGROWERS CEO **Dan Galligan** also briefed the minister on the adverse impact electricity prices are having on irrigated agriculture within the industry and across regional Queensland more generally.

"We also provided an update on the Smartcane BMP program, noting the increasing importance of being able to demonstrate sustainable sugarcane production and to our customers," Mr Males said.

"The Minister acknowledged and congratulated the industry on taking these important steps for the benefit of the environment and also to meet consumer demands." ■

Pictured: (from left) LNP Senate candidate Susan McDonald, QSL Managing Director Greg Beashel, Federal Trade Minister Simon Birmingham, CANEGROWERS Head of Economics Warren Males and CEO Dan Galligan, ASMC Trade Advisor David Rynne.



TELSTRA ANNOUNCES BUSH COMMUNICATIONS UPGRADES

Telstra has announced it will address some of the issues around the reliability of landline services identified in a November 2018 report of the Regional Telecommunications Review, such as extended faults and repair times for some Telstra customers in regional, rural and remote Australia.

National Farmers' Federation CEO **Tony Mahar** welcomed the announcement saying landline services were a lifeline for people in remote communities.

"For many of these people, Telstra's fixed voice service is the only connection to the outside world if their internet service is not working," Mr Mahar said.

"Voice services are literally a lifeline for many people – this lifeline must be maintained."

"For this reason we welcome Telstra's commitment to make much needed repairs and upgrades to some of its landline infrastructure, and to a regular review of aged landline repairs." ■

NEW ENVIRONMENT MANAGER

CANEGROWERS has appointed **Mick Quirk** as the organisation's new Environment and Sustainability Manager.

Mick, who has headed up the Smartcane BMP program since 2015, will begin his new role on 25 March, replacing **Matt Kealley** who recently took on the role of Membership and Innovation Manager after more than 10 years in the Environment portfolio.

"I've really enjoyed the past ten years and the many, many challenges we've tackled in the environment and sustainability space," Mr Kealley said. "But I'm also looking forward to something different and tackling some new challenges over the years ahead."

Check out the 8 April issue of *Australian Canegrower* for an interview with Matt Kealley and Mick Quirk about their new roles.

CANEGROWERS is seeking applications for the Smartcane BMP manager role. For information visit www.canegrowers.com.au/jobs-at-canegrowers ■

Reef regs bill allows goal posts to keep shifting

The CANEGROWERS submission on the Reef Bill currently before the Queensland Parliament highlights an alarming provision – the Bill hands broad powers to the public service to change minimum cane farming standards in any way at any time with no regard for the impacts on growers or their communities.

Under Section 81, the Bill provides the Department of Environment and Science's chief executive with the power to make a standard and to review and change it at any time. While the chief executive must consider submissions, there is no requirement for them to account for the impacts of any changes.

In effect, the goal posts can be shifted at any time. Further, there is no commitment to ensure that changes are evidence-based or driven by the need to balance environmental, social and economic outcomes.

CANEGROWERS believes it is not reasonable that a growers' ability to farm profitably will be at the whim of a government department, with no explicit consideration of economic and social impacts, no process for independent review and no recourse for appeal.

The CANEGROWERS submission on the Bill, lodged with the Innovation, Tourism Development and Environment Committee makes four recommendations.

At the outset the submission rejects the need for the legislation and its associated regulations.

Among the CANEGROWERS recommendations are that Section 81 be revised to ensure there are no changes to the existing minimum standards for at least five years, that there is an independent review of minimum standards, including their economic and social impacts, and that there be an appeal process for any changes planned by the Department.

Another recommendation in the CANEGROWERS submission is that the section which is essentially a data grab (Section 89) be removed.

The State Government has proposed that it be able to demand and use data related to fertiliser and chemical usage from growers and any business or individual in the farming supply chain. This would include advisors and retailers and suppliers with no guarantees about the confidentiality of the data.

CANEGROWERS says this power is intrusive, unnecessary and will add costs to the cane farming business environment.

The existing minimum standards for cane farming already require growers to keep records of their fertiliser and chemical applications and produce those records to demonstrate compliance.

Section 79 of the Bill would result in southern Burnett-Mary region growers having to comply with the regulations, another provision which CANEGROWERS opposes.

The CANEGROWERS submission says the inclusion of these regions would be an unnecessary cost to both the public purse and growers.

The Burnett-Mary region has been a low priority for interventions related to Reef water, as reflected in the relatively modest Reef program investments allocated to the region in the past 10 years. ■

Anger at Reef regs hearing plan

"We call on the Committee to reconsider this plan of minimal consultation and travel outside of the city to meet with the people and see the regions which will be most affected by the Bill."

Queensland farm groups say it's outrageous public hearings into the impact of new farm regulations have not been scheduled in regional areas.

The parliamentary committee looking into the *Environmental Protection (Great Barrier Reef Protection Measures) and Other Legislation Amendment Bill 2019* has scheduled one hearing in Brisbane for 25 March.

CANEGROWERS and other agricultural groups have been allocated a very limited time to speak to the Committee.

The Queensland Parliament's website said, 'possible additional hearings to be confirmed' but that had not happened by the time *Australian Canegrower* went to print.

CANEGROWERS CEO Dan Galligan called on the Committee to reconsider its plan of minimal consultation and travel outside of

the city to meet with the people and see the regions which will be most affected by the Bill.

"A failure to hear from those affected in the communities where they live would be disrespectful to the people of Queensland," Mr Galligan said.

"The State Government should adjust its time frames to allow the Committee the time required to travel to do justice to its inquiry into this significant piece of legislation."

AgForce said the refusal to adequately consult demonstrated government contempt for the views of primary producers.

The Queensland Farmers' Federation said farmers in reef catchments had a right to be heard and the government had a duty to listen. ■

Time to vote in Elections 2019

If you are a grower member of CANEGROWERS in the Bundaberg, Burdekin, Tableland or Mackay Area, it's time to have your say about your local board or area committee.

Ballot papers have been posted to the nominated voter for each membership in these areas as the CANEGROWERS election process moves towards an outcome.

Held every three years, the election process is a democratic process which seeks to have the best candidates representing their fellow growers. CANEGROWERS encourages men and women of all ages to put their names forward.

A Board role for a CANEGROWERS district company can lead to a position on the CANEGROWERS Policy Council and the Queensland Cane Growers Organisation Board.

Ballot papers for the Bundaberg, Burdekin and Tableland boards along with the

Mackay Area Committee need to be completed according to the enclosed instructions and mailed for counting.

They must arrive at the CANEGROWERS office in Brisbane by 5pm on 12 April – so the sooner you complete your ballot and post it, the better!

CANEGROWERS Proserpine is conducting its own ballot and nominations for the CANEGROWERS Innisfail board have only just closed, on 22 March.

CANEGROWERS can confirm that after nominations were tallied, the following districts received sufficient names to form a board/committee and no election is necessary - Mossman, Cairns Region, Tully, Herbert River, Plane Creek Area Committee, Isis, Maryborough and Rocky Point.

The final results of the CANEGROWERS Elections 2019 will be declared on 15 April and the new boards will take office from 1 May 2019. ■

Correction

In the 25 February issue of *Australian Canegrower* we misidentified Tully grower **George Henry** (pictured below) as being from the Burdekin in the article *Trials, Results and Research - the driving force for on-farm change*. George farms in the Upper Murray region, south of Tully. We apologise to George and our readers for any confusion.



CANEGROWERS

ELECTIONS 2019

BALLOT PAPERS TO BE RETURNED BY 5PM 12 APRIL

WWW.CANEGROWERS.COM.AU



ZP RAT

Zinc phosphide bait

Gets the job done quickly and efficiently

- ✓ Extruded pellets for attractiveness
- ✓ Coated to prevent moisture breakdown
- ✓ Easy to broadcast in convenient satchets
- ✓ Fast kill
- ✓ Minimal risk to non-targeted species
- ✓ Manufactured by the makers of **Tomcat**



For more information on ZP Rat, go to www.barmac.com.au or call 07 3802 5050

a division of Amgrow

Policy Update

Environment with Matt Kealley

Industry with Burn Ashburner

BONSUCRO INSPIRE AWARDS

At CANEGROWERS, we believe that Australian sugarcane farmers are doing remarkable things when it comes to protecting and caring for their environment and the Great Barrier Reef. We share this story with the world at every opportunity.

Recently, I attended the 2019 Bonsucro Global Week in Bangkok, Thailand (March 11-14). This is the annual flagship event of the global non-profit organisation that exists to promote sustainable sugarcane production, processing and trade which attracts delegates from around the world to hear and talk about social, environmental and business issues.

This year I gave a presentation on Smartcane BMP and explained the work Queensland growers are doing to support business profitability, industry productivity and sustainability for the environment and the Great Barrier Reef.

I spoke about the farming families investing their time and money to improve their cane production and support improved water quality flowing to the reef and discussed the challenges of meeting new regulations and the need to produce sustainable sugar.

These messages are not new but we need to keep telling our story and raising awareness of the great people in our industry and the great things they are doing.

We need to keep setting the record straight.

One way we have been doing this is through Cane to Coast - a dedicated section on the CANEGROWERS website which features some of the innovative solutions and projects that are changing the way our industry interacts with the environment. It must be working.

CANEGROWERS was nominated for and won the **Bonsucro Inspire Award** for Excellence in Sugarcane Sustainability Communications for the Cane to Coast platform.

Nominees had to demonstrate an effective communications piece or campaign that has contributed to advancing an understanding of sustainable sugarcane practices, projects or issues.

The judges looked for examples that have shown engagement with a variety of audiences.

Cane to Coast honours and promotes the innovation and conservation efforts that Queensland growers are making to manage run-off and environmental impacts from their farms, to protect the Great Barrier Reef.

You are doing remarkable things and the world is taking notice. I'm proud to work for you and share what you do with the world. ■



OLD ISSUES, NEW APPROACHES

CANE BURNING

For a number of years, CANEGROWERS has had concerns about the interpretation of the Commissioners Notice that allows growers to burn cane, tops and trash without a permit.

Clearly growers must understand and comply with the conditions of the Notice before lighting a fire and what CANEGROWERS doesn't want is growers believing they are burning in accordance with the Notice, but because of interpretation, finding they are not.

Due to this uncertainty, CANEGROWERS recommends that the safest way for growers to ensure that they are burning legally is to obtain and comply with a permit.

CANEGROWERS has been working with Queensland Fire and Emergency Services to review the Commissioners Notice. A consultation paper has been produced and workshops have been held in Bundaberg, Mackay, Burdekin, Ingham, Tully and Gordonvale, with one more to come in Rocky Point.

It is obvious from these meetings that cane burning is taken very seriously and growers are proud of the industry's record in this area over many years. The use of burning in sugarcane production is still an essential tool, which needs to be retained and used responsibly and safely.

The review is not an easy one, with different needs and skill sets in different regions. It is due to be finalised before the start of the 2019 crush.

TRANSPORT

The proposed National Class 1 Agricultural Vehicle Exemption Notice, which will allow harmonised access for oversize and over-mass agricultural vehicles to public roads without an individual permit, has progressed.

Local Government Areas have been asked by the National Heavy Vehicle Regulator to provide approval. There is a possibility that the Notice will be gazetted by the end of April 2019.

CANEGROWERS has been part of National Farmers' Federation transport subcommittee to provide industry input into the development of this Notice. It has been a long process and growers will need to be given the opportunity to understand and comply with the conditions of the Notice.

CANEGROWERS will continue to work to provide growers with options which are safe and reduce the administrative burden. ■



STRONG SUPPORT FOR WTO ACTION FROM THAI INDUSTRY

The 10th Thai-Australia Sugar Industry Dialogue has been held this month.

Both industries are export-oriented and dependent on the world sugar market and while we are fierce competitors in the Asia-Pacific region, our industries work closely to improve the regional and world market environment.

The meeting commenced with a review of the market, including an assessment of the adverse impact the massive surge in global production, especially from India, and the response of speculators has had on sugar prices.

According to Green Pool, the world sugar surplus for 2018/19 is 2.6 million tonnes. India's contribution to stocks is 7.8 million tonnes. Put simply, without India's subsidised surplus production the world in 2018/19 would be a 5.2 million tonne deficit.

Without a surplus, prices would be stronger which is why there is support for the action launched in the WTO by Australia, Brazil and Guatemala to overturn the subsidies that are in violation of India's international commitments.

During the meeting, Thai government officials indicated that they would be seeking to join in the consultations with India. This is very good news and a clear indication of the strength of international support for change.

When Australia, Brazil and Thailand challenged the European Union's sugar export subsidies in 2003, world prices were unsustainably low – less than US10c/lb. After the case was resolved in 2005 and the EU reduced its subsidised exports, prices were stronger.

The WTO decision gave those in the European Commission seeking a change

in sugar policy the grounds for reform. There are also advocates for change in India. The fundamental change required there is to link the sugarcane price to the sugar price and to provide income support to poor growers that is not linked to their level of production.

Australia, Brazil and Guatemala's action in the WTO supported by Thailand against India's sugar subsidies is an important step in building international pressure in support of those in India lobbying for change.

CANEGROWERS welcomes it. We will be doing all that we can to ensure a successful outcome. Securing sustainably higher sugar prices is our goal. ■



CANE BOOM SPRAYER DESIGNED FOR AUSTRALIAN CONDITIONS

**4 & 6
ROW
CONFIGURATIONS
AVAILABLE**



The Silvan Cane Boom is designed specifically for Australian cane growers. It incorporates choice of standard or shielded spray heads and air induced nozzles to minimise spray drift.

The fully galvanised 4 or 6 row boom comes standard with a hydraulic twin folding ram mechanism and adjustable tracking arms.

- Available with 600, 800 or 1100 Litre tank capacity
- 50mm Camlock bottom fill and venturi chemical suction probe (1100 Litre only)
- Choice of manual, electric or automatic rate control
- Optional broadacre boom attachment
- Optional hydraulic boom lift

Silvan

The Spraying Specialists

Call 1300 SILVAN (745 826) or visit silvan.com.au for more information or to find your nearest dealer

Cane farm program receives funds for the future

Cane Changer and a number of other projects which work with sugarcane growers in the Great Barrier Reef catchment areas will receive a share of \$19 million in the first round of water quality grants through the Reef Trust Partnership.

Eleven projects have been funded so far, with the Great Barrier Reef Foundation expecting the total value of the investment in regional Queensland to exceed \$33 million when 'in-kind' contributions from delivery partners, including CANEGROWERS, are included.

CANE CHANGER

Established by CANEGROWERS and delivery partner Behaviour Innovation, with seed funding from the Queensland Government, Cane Changer has already delivered more than 260 workshops and activities over two years in cane-growing communities from Mossman to the Herbert River.

The recently announced \$1.41 million in combined funding from the Australian Government's Reef Trust and the Great Barrier Reef Foundation will allow the program to expand into the Burdekin, Mackay and southern growing regions of Queensland over the next 12 months.

Australia's Environment Minister **Melissa Price** visited CANEGROWERS Chairman **Paul Schembri's** Mackay district farm to announce the funding on 14 February.

Mr Schembri took the opportunity to show the Western Australian regional MP some of the cane growing practices, such as

trash blanketing, which reduce runoff and erosion to benefit the marine environment and improve soil health and productivity.

"Project Cane Changer is about reinforcing positive farming practices and it links into the industry's Smartcane BMP program which is now being recognised globally as a guarantee of sustainability," Mr Schembri said.

"Over the past two years where Cane Changer has been running, Smartcane BMP accreditation has increased by more than 300% showing that a voluntary program that works in partnership with growers will achieve great things."

"Cane Changer seeks to understand the grower, recognise them for their on-farm changes, and create the right conditions to support ongoing practice change into the future," explained **John Pickering** from Behaviour Innovation.

"More than 246 growers have signed commitments, putting in writing their next steps to protect the Great Barrier Reef."

The Queensland Farmers' Federation also welcomed funding to support the efforts

of farmers and people working with the agriculture sector to safeguard the Reef.

The Reef Alliance Phase Two Project will see industry and NRM groups work with farmers to improve their land management practices while the Early Career Extension Project will place up to eight emerging extension officers with organisations that provide agricultural advisory services across the reef catchments to build professional capacity. ■

Pictured: (below left) CANEGROWERS Chairman Paul Schembri talks to the media on his farm with Australia's Environment Minister Melissa Price, (below right) Paul Schembri explains the benefits of trash blanket to Melissa Price.





Sibelco Aglime was applied to the last cane crop before rotating into peanuts. There was a definite yield increase in the cane and the lime carried through to the next crop.

"The Sibelco Aglime seemed to work well. It was available for the next crop as well giving us a double benefit."

"Even without peanuts in the rotation I think there would be a definite benefit from using Aglime on the cane ground."

Jack Russo, Farnsfield, QLD.

Sibelco® Aglime

Great crops start with great soil

High quality agricultural limestone to help improve soil quality and grow better crops.



**Mark Hampson - QSL Executive
Manager Marketing and Risk**

Pricing team shares market insights

QSL's pricing team will be out and about next month, providing a series of Market Update sessions for growers throughout the state.

QSL Executive Manager Marketing and Risk **Mark Hampson** said the sessions were open to any interested growers and were a great opportunity for them to hear the latest on the market and speak with the QSL team actually pricing and selling their sugar.

"We'll be covering off on the key themes currently affecting world raw sugar prices, as well as the various QSL pricing options available for the season to come," Mark said.

"Each session runs for roughly an hour, with plenty of time for questions and a chat with the QSL pricing team over a drink afterwards."

Farm visits are also available. Contact your local QSL representative for details.

QSL PRICING TEAM MARKET UPDATE SESSION DETAILS:

REGION	WHEN	VENUE
Tully	5.30pm Monday 8 April 2019	Tully Senior Citizens Hall
Plane Creek	4.30pm Monday 8 April 2019	Sarina RSL
Tully	7.30am Tuesday 9 April 2019	Tully Senior Citizens Hall
Innisfail	5.30pm Tuesday 9 April 2019	Mourilyan Sugar Heritage Centre
Mackay	5.30pm Tuesday 9 April 2019	Shamrock Hotel, Mackay
Babinda	7.30am Wednesday 10 April 2019	Babinda RSL Hall
Mulgrave	11am Wednesday 10 April 2019	Parkview Tavern, Gordonvale
Proserpine	6:15pm Wednesday 10 April 2019	Metropole Hotel, Proserpine
Tablelands (Tableland Mill Suppliers)	6pm Wednesday 10 April 2019	Jackaroo Motel Conference Room, Mareeba
Tablelands (Mossman Mill Suppliers)	7am Thursday 11 April 2019	Jackaroo Motel Conference Room, Mareeba
Mossman	11am Thursday 11 April 2019	Mossman CWA Hall
Burdekin	Thursday 11 & Friday 12 April 2019	TBC
Herbert River	Tuesday 16 & Wednesday 17 April 2019	TBC



April deadline for pricing choices

Growers marketing with QSL are reminded they must finalise their pricing nominations for the 2019 Season by next month's Pricing Declaration Date.

After this time, nominations for QSL's managed pools and self-managed pricing options will close for the coming season, with any unallocated 2019-Season GEI Sugar tonnage defaulting to the QSL Harvest Pool.

The Pricing Declaration Date is also the last opportunity for growers with existing unfilled orders in the 2019-Season Target

Price Contract to cancel or reallocate these to an alternate pricing option. Growers using the Individual Futures Contract can also cancel or reallocate unfilled 2019-Season orders before the Pricing Declaration Date, but only if no portion of the order has been filled.

It is important to note that while QSL's 2019-Season Pricing Declaration Date is 30 April 2019, local nomination deadlines apply to growers supplying Bundaberg Sugar, Isis Central Sugar Mill and Mackay Sugar's Mossman Mill, as outlined below:

MILLING DISTRICT	2019-SEASON PRICING DECLARATION DATE
Bundaberg Sugar	See your miller for nomination details
Isis Central Sugar Mill	18 April 2019: See your miller for nomination details
Mackay Sugar – Mackay districts	5pm 30 April 2019: Nominations made through QSL Direct
Mackay Sugar – Mossman district	19 April 2019: See your miller for nomination process details
MSF Sugar	5pm 30 April 2019: See your miller for nomination process details
Tully Sugar	5pm 30 April 2019: See your miller for nomination process details
Wilmar	5pm 30 April 2019: Nominations made through QSL Direct

QSL Direct is currently accepting nominations for the following QSL-managed pools and self-managed pricing options:

- 2019 Harvest Pool
- 2019 Actively Managed Pool
- 2019 Guaranteed Floor Pool
- 2020 2-Season Actively Managed Pool
- 2021 3-Season Actively Managed Pool
- 2019, 2020 & 2021 Target Price Contract
- 2019, 2020 & 2021 Individual Futures Contract

Growers should read QSL's Pricing Pool Terms before participating in any QSL pricing or payment product. These are available at www.qsl.com.au or by contacting your local QSL representative.

PRE-CRUSH ADVANCE PAYMENT

Nominations for the 2019 Pre-Crush Advance Payment scheme are now closed and participating growers will receive their payment on 29 March 2019. For further information regarding this scheme, visit www.qsl.com.au or contact your local QSL representative.

DISCLAIMER:

This update contains information of a general nature only and should not be regarded as comprehensive or complete. Please note that QSL does not provide financial or investment advice to growers in relation to pool selection or pricing decisions. Growers should seek their own financial advice and read the QSL Pricing Pool Terms in full which can be found on QSL's website. Nothing contained in this update should be relied upon as a representation as to future matters. Information about past performance is not an indication of future performance. QSL does not accept any responsibility to any person for the decisions and actions taken by that person with respect to any of the information contained in this update.

NEW SOIL HEALTH TOOLBOX AVAILABLE ONLINE

Sugar Research Australia (SRA) has launched a new online resource for sugarcane soil health.



The Sugarcane Soil Health Toolbox is located on the SRA website and provides a wealth of information to help growers build their knowledge of soil health and adopt improved farming practices.

This online resource provides practical information and grower experiences, as well as information on research activities and investment occurring across the industry into soil health.

SRA Senior Researcher, Dr Danielle Skocaj, said the Toolbox had been built on years of established research into improved farming systems and soil health and combined this with new and emerging demonstration and research outcomes from SRA's current investments.

SRA is currently investing in a major Soil Health Program that spans multiple projects and leading research institutes,

with this program continuing research, development and adoption activities around soil health.

"The Toolbox also provides an insight into soil health activities occurring in different regions," Dr Skocaj said.



One of the tools on the page is an interactive map that highlights project sites so that growers and millers can easily see soil health research occurring in their area and who to contact regarding that research.

"The Soil Health Program has a strong focus on collaboration between researchers, growers, millers and extension providers," Dr Skocaj said.

"We are working together to develop practical tools and advice that will deliver productivity, profitability and sustainability outcomes for the industry.

"Improving soil health is complex and can take time and patience. However, through the Soil Health Program, which is showcased on the website, we are improving one of the industry's most valuable resources – the soil."

The Soil Health Toolbox is available on the SRA website: www.sugarresearch.com.au/soilhealth/

• SRA acknowledges the funding contribution from the Queensland Department of Agriculture and Fisheries towards this research activity. ■

MAKE THE MOST OF RAT-BAITING PERMIT WINDOW

Supplied by BarMac

The rats that cause the most damage to sugarcane crops in Queensland's central and northern cane districts are native grassland rats – the ground rat (*Rattus sordidus*) and the climbing rat (*Melomys burtoni*).



Under a strict industry-wide permit issued by the Queensland Government, which is reviewed every three years, these species can be controlled via baiting – provided growers abide by permit conditions, which include using only specified products and only baiting between 1 October and 30 June.

Sugar Research Australia (SRA) says the aim is to knock down rat populations in cane before peak breeding. Breeding in ground rats begins around November, with March and April being the peak breeding season. Climbing rat breeding year-round, but peak after cane-canopy closure (from February onwards).

The permit window allows for optimum baiting of both species.

Conditions of the permit require growers to provide their local productivity service company with details of cane blocks they intend to bait (by phone, fax or email).

Growers are reminded they can only use rat baits that are approved under the permit's conditions.

Barmac business manager **Chris Ramsey** said the company's ZP Rat Bait is one of only two in-crop baits permitted for use within the cane crop.

"In ZP Rat Baits, the zinc phosphide is uniformly distributed within an extruded pellet of attractive food ingredients, unlike other baits of grain coated with zinc-phosphide."

"ZP Rat pellets, packaged in 10gm sachets, are treated to prevent breakdown from moisture and rain, and pose minimal risk of secondary poisoning to birds, mammals and pets."

He said the only baiting permitted in non-crop harbourage areas is around man-made structures.

"The company's TOMCAT baits are effective for controlling rats in and around farm buildings, while ZP Rat Bait has been proven as one of the most effective means of rat control within crops." ■

Pictured: (above) rat damage to sugarcane crops, (above inset) climbing rat (Melomys burtoni).

WEED MANAGEMENT - KNOW YOUR ENEMY

By Debra Telford
Smartcane BMP Regional Facilitator



Weed control seems to be a never-ending battle for cane farmers. But some growers have more success than others. So, how do they do it?

It is easy to say from behind our desk as a Smartcane BMP facilitator that there are ways growers can do better when it comes to weed control. We often see this on our Smartcane BMP pre-audit farm visits and in discussions with different growers across the regions.

It is not uncommon to hear, 'oh but that block got away because...'. It happens to us all but there are a few critical steps we have included as part of our Smartcane BMP Managing Weeds, Pests and Diseases module that can help towards successful weed control.

Our industry standard says: '*consider your weed pressures and implement management strategies for the whole crop cycle (fallow, plant and ratoons) which leads to less reliance on residual herbicides*'. How do we do this on a practical farm scale?

KNOW AND IDENTIFY YOUR WEEDS

Use the SRA WeedID tool or the old hard copy BSES *Weeds in Australian Cane Fields* 1989 publication. These are an excellent resource to help identify the types of weeds that are present on your property.

Also identify any Weeds of National Significance and mark the occurrence of these on a farm map for future reference.

Identification of different weed species and knowledge of their ecology helps to determine control strategies.

For example, a systemic herbicide may be selected for control of perennial weeds regrowing from underground stems or tap roots, whereas a contact herbicide may be selected for control of small annual weeds germinating from seed.

DEVELOP A WHOLE OF FARM INTEGRATED WEED MANAGEMENT PLAN

The aim of a whole of farm integrated weed management plan is to develop a set of cost-effective strategies to reduce the weed seed bank in the soil.

This requires a planned approach throughout the entire crop cycle rather than simply reacting to weed infestations as they appear.

All forms of weed control should be implemented, including herbicide application, good farm hygiene, appropriate cultural practices and mechanical controls.

Not all strategies will need to be used in all blocks across a farm, but it is important to use the best strategy for each situation. ►

One successful method of achieving this is to use the fallow period to break the seeding cycle and reduce the seed bank through chemical control rather than attempting to grow a legume crop.

When done well, this will reduce the seed bank resulting in low weed pressure throughout the rest of the crop cycle.

OPTIMISE HERBICIDE EFFICACY AND MINIMISE ENVIRONMENTAL IMPACT THROUGH:

- Control of weeds at juvenile growth stage.
- Use of correct adjuvants where recommended.
- Timing of application in relation to time of day, climatic conditions and weed vigour.
- Consideration of prevailing and forecast weather conditions to minimize risk of loss of herbicide in stormwater runoff. Trials have shown residual herbicides have a higher risk of loss in stormwater runoff than knockdown herbicides.
- Consideration of farming system design to minimise risk of loss in stormwater runoff (trials have shown reduced herbicide losses from controlled traffic systems).

MONITOR, REVIEW AND UPDATE

It is advisable to monitor and record how well your weed strategy is working and use this knowledge to modify your future strategies if needed.

Know the mechanisms by which weed seed gets onto your farm and introduce measures to minimise entry.

Although weed control can feel like a never-ending battle, an integrated weed management strategy can produce significant improvements.

An effective strategy should aim to reduce the reliance on herbicides and include the use of farm hygiene to minimise weed seed spread.

It should also involve fallow spray programs to reduce soil seed reserves, fallow crops to out-compete weeds, strategic tillage and trash blankets to suppress weeds in ratoons.



For more information or for help developing an integrated weed management plan, contact your local Smartcane BMP facilitator.

Call 07 3864 6444 or visit www.smartcane.com.au/#facilitators. ■

Pictured: (page 16) Calipo vine infestation on an Innisfail cane farm, (right) sugarcane crops growing in a weed free environment.



ADAMA continues long term focus on new technology for sugarcane

Supplied by ADAMA



Global crop protection company, ADAMA, has invested significantly in a portfolio of products that are having a positive influence across the cane industry. With a number of developments in the pipeline, there is further excitement ahead.

Jonathon McDonald, ADAMA's Market Development Manager for Queensland and the Northern Territory, said legislation introduced more than seven years ago to reduce run-off to the Great Barrier Reef has changed the way crop protection inputs are used by cane growers.

"Growers are using more residual herbicides to reduce the number of passes over paddocks to control weeds. Some growers are getting away with just one application after the residual herbicide," Mr McDonald said.

"With the move away from burning prior to harvest in most growing regions in the industry, there is also the need for herbicides to move through trash blankets."

ADAMA's Bobcat® i-MAXX herbicide has been increasingly adopted by growers throughout industry.

It combines the strength of two active ingredients for extended residual control

and herbicide resistance management.

Its performance in both field trials and extensive commercial use demonstrates the strong and broad-spectrum control it provides on a range of grasses and broadleaf weeds in plant and ratoon crops, including barnyard grass, summer grass, liverseed grass, blue top and Ipomea vine species.

A new soluble granule formulation, Bobcat i-MAXX SG, was launched in 2018, providing growers with a higher loaded product and a more efficient way of applying the active ingredients.

A new use pattern was also added to the label which enables growers to spot spray guinea grass using hand held equipment or optical spray technology.

ADAMA's General Manager of Technical and Development, Andrew Horsfield, said ADAMA is committed to a long-term investment in innovation in the sugar industry.

Since 2010, a key focus has been on ensuring growers have access to effective new products to minimise the effect of any restrictions on the use of existing products such as Diuron, Mr Horsfield said.

"The company was focused on evaluating and launching new herbicides for the sugar industry to provide growers with a range of modes of action to manage weeds efficiently," he said.

Recent work has focused on extending the registration of Palmero® TX into sugarcane. Palmero TX is a co-formulation of isoxaflutole and terbuthylazine, controlling a wide range of grasses and broadleaf weeds.

This will be the first registration of a terbuthylazine product for sugarcane in Australia and registration is expected in late 2019 or early 2020.

Mr Horsfield said that the use of Palmero TX increases the weed spectrum and

activity compared with solo isoxaflutole products like Palmero 750. By formulating as a mixture, it eliminates the need to tank mix with another residual herbicide.

"Palmero TX, will provide a genuine rotational product for Bobcat i-MAXX and Bobcat Combi," Mr Horsfield said.

"We are also screening a lot of other active ingredients – some that have never been used in cane, some that are registered for cane overseas and some that are registered for other crops in Australia.

"We understand that due to the range of challenges faced by cane growers, we need to provide a flexible product portfolio."

ADAMA's development trials are conducted from northern New South Wales up to Innisfail in North Queensland and on the Atherton Tablelands. This ensures products are tested under a range of growing conditions and soil types.

Mr McDonald said Bobcat i-MAXX SG had also become more important following recent restrictions on the use of 2,4-D herbicide.

"The longer residual products are reducing the need for 2,4-D and by applying as a pre-emergent application it has a very low risk of drifting on to susceptible crops providing the label application recommendations are observed," he said.

ADAMA is also investigating new post-emergent broadleaf weed control solutions that will offer alternatives to 2,4-D and introduce additional modes of action not used in the sugar industry.

Mr McDonald said soil health was another key focus area, especially since it was a common factor in reduced yields.

ADAMA recently achieved registration for Nimitz®, a new nematicide that provides growers with an important new option for reducing yield losses from nematode damage.

Registered for use in a wide range of crops, Nimitz introduces a new mode of action into Australian farming. The active ingredient fluensulfone, provides rapid activity on nematodes and controls both root-knot nematode and root lesion nematode species that affect sugarcane.

The new mode of action makes it a "true" nematicide, that provides irreversible activity on target nematode species

immediately after application. The introduction of Nimitz is important as there are few remaining nematicides available for growers.

It is also selective on beneficial nematodes and organisms, which play a key role in healthy soils and maximising production.

"Nimitz is easy to use and works well even in high rainfall areas. Growers can use it without adversely affecting soil health while protecting yield potential. In some trials there have been yield increases of up to 15%," Mr McDonald said.

Further development work is under way with Nimitz to allow its use in ratoons.

ADAMA's range of products also includes insecticides like Pyrinex® Super for managing wireworm and other pests of crop establishment. Its unique co-formulation targets a range of soil pests that damage germinating plant cane and reduce crop establishment.

Meanwhile, the company has also developed clever tools such as the ReefAware app to boost the effectiveness of its products, and to help growers use them safely and responsibly.

The app helps cane growers and advisers to maximise herbicide efficacy whilst

minimising run-off and its potential impact on the environment.

Suitable for iPhone, iPad and Android smartphones, ReefAware assesses the suitability and timing of herbicide applications by taking recent, current and short-term forecast weather conditions into account, along with site soil type and moisture, topography and proximity to water courses.

It also considers any neighbouring water bodies, as well as label use requirements, to determine the suitability of immediate herbicide application within the next 24-72 hours.

Mr McDonald said the app highlighted the company's strong focus on stewardship and has proven popular with an extensive number of agronomists and growers across Queensland.

For further information on ADAMA's range of products for the cane industry, advisers, agronomists and growers can contact their local ADAMA representative. ■

Pictured: (page 18) an ADAMA Bobcat I-MAXX demonstration site in Bundaberg, (below) The ADAMA Sugar team in Bundaberg looking at Bobcat I-MAXX and other herbicides in development in Sugarcane.



DRAINAGE ISSUES AND LEVEE BANKS

"A MUDDY AREA"



A number of Queensland's cane growing regions have experienced a very soggy start to the year, with widespread flooding in the Burdekin, Herbert River, Cairns and Mossman districts in recent weeks.

That might explain why I have been fielding regular calls from growers requesting more information on rights, duties and obligations relating to water flow, drainage and levee banks.

Drainage issue disputes between neighbours are always difficult to resolve and there are no easy answers. These types of cases always depend on their own particular facts and circumstances.

There are various options to help resolve a dispute between neighbours regarding water flow, drainage and run-off issues, including (in no particular order):

1. Direct discussions and negotiations between the neighbours.
2. Use of free mediation services through the local Dispute Resolution Centre. These free services involve using an independent person to meet with the neighbours to try to work out a mutually agreed solution and settlement of the dispute. My recent article in this magazine (October 2018) provides more details.
3. Raise the matter with the local council and/or DNRM office. These government authorities do have some jurisdiction in this area, although my experience tells me they are usually reluctant to get involved, but you never know. In some cases, applying fill and interfering with the flow of water can be matters that require government authorisations, planning approvals or licences. New State laws relating to constructing or modifying levee banks were made in 2014. See below for more details.
4. Are there any relevant River Trusts or local water authorities (Water Boards) that may have jurisdiction?
5. Consider exercising legal options. Legal proceedings are possible but should not be taken lightly as they can be expensive, time consuming, uncertain in outcome and stressful with potentially adverse effects on neighbourly relations. ▶



By Chris Cooper,
CANEGROWERS Legal Advisor

- The legal principals applicable in disputes of this kind are relatively easy to state but not so easy to apply in practice. The particular facts and circumstances that have to be considered in light of the legal principles that have been established. The High Court has generally accepted the following passage from a 1940 English decision (*Sedleigh-Denfield v O'Callaghan*) as the proper test:

"A balance has to be maintained between the right of the occupier to do what he likes with his own, and the right of his neighbour not to be interfered with. It is impossible to give any precise or universal formula, but may broadly be said that a useful test is perhaps what is reasonable according to ordinary usages of mankind living in society, or more correctly in a particular society."

The type and nature of the watercourse involved is important. If the water course involved is a natural one then the higher proprietor is not liable just because surface water flows naturally in an unconcentrated state from their land to the lower proprietor land. But the higher proprietor may be liable if the natural water flow is interfered with and the water flows in a more concentrated way that causes damage to lands that adjoin that water course and legal action may well be available to the lower proprietor due to the special rights that apply for natural watercourses. However, the higher proprietor may still not be liable if the interference is just from a natural use of the higher proprietor's land. But it should be remembered that the lower proprietor is generally not bound to accept the water and may put up barriers provided the lower proprietor does no more than reasonably necessary to protect his enjoyment of his own land.

LEEVE BANKS

The Queensland Government has introduced laws to regulate the construction or modification of levee banks. These laws became effective in May, 2014. If you propose to build a new levee or modify an existing levee from this date, you need to comply with this regulation.

WHAT IS A LEEVE?

Levee banks are defined as artificial embankments which prevent or reduce overland flow. Some structures which act as levees are excluded from the definition.

These exclusions include:

- Prescribed farming activities, including cultivating, laser levelling or contouring, clearing or replanting vegetation. (Note however that if fill is left over from prescribed farming activities, such as laser levelling or contouring, and it is subsequently used to divert overland flow water, then this will be captured under the definition of a levee);
- Irrigation infrastructure or levee-related infrastructure;
- Fill used for gardens or landscaping (up to a certain volume);
- Structures regulated under other

Acts. This includes roads, railways and water storages; or

- Coastal infrastructure, such as groynes, used to protect life or property from the threat of coastal hazards.

REGULATION OF LEEVES

Levees play an important role in floodplain management. They also have the potential to impact on neighbouring properties, the community and the catchment as a whole. It is therefore important to provide a consistent and effective method for regulating them.

The Water Act 2000 defines what a levee is and provides that the construction of a new levee or the modification of an existing levee is now an "assessable development" under the Planning Regulation 2017.

This means that any person planning to construct or modify a levee must give consideration to the potential effects of their levee on the movement of floodwater, and how this could affect other people and properties.

ASSESSMENT OF LEEVES

The level of assessment of a levee will depend on the levee category. There are three categories which are determined by the level of impact of the proposed levee:

- **Category 1** levees do not have any off-property impacts and are accepted development.
- **Category 2** levees do have off-property impacts and have an affected population of less than 3 people and are assessable development that require code assessment.
- **Category 3** levees do have off-property impacts and have an affected population of at least 3 people and are assessable development that require impact assessment.

Landholders will need to apply for a development approval for category 2 or 3 levees. Local councils are responsible for assessing levee applications.

As assessment managers, councils are able to make decisions about levees based on their vision for their local government area and their specific planning and management needs.

FURTHER INFORMATION

For further free advice and information regarding legal matters, please contact CANEGROWERS Legal Adviser, Chris Cooper on Free Call 1800 177 159. ■

Classifieds

FIRST 5 LINES FREE* FOR CANEGROWERS MEMBERS!

Book online anytime of the day or night at www.canegrowers.com.au or email us at ads@CANEGROWERS.com.au

Next deadline is **1 April 2019**.

* As a FREE service to CANEGROWERS members, Australian Canegrower will print suitable classified advertisements **UP TO 5 LINES FREE, FOR ONE ISSUE ONLY**. A charge of \$5.50 will apply for each extra line or part thereof. A charge will apply for advertising of non-cane growing activities. Advertisements must relate exclusively to cane farming activities, e.g. farm machinery etc. Advertisements from non-members are charged at \$11 per line incl GST. Only pre-paid ads will be accepted.



Cane Harvester Parts

Neil's Parts Australia
1800 463 457
 AH 0417 662 137, 0408 735 148
www.neils.com.au

JOHNNY FARMING COMPANY

New Hydraulic Heavy Duty OFFSETS

3 metre width, 28 discs, All bath bearings
 \$12,000 plus GST (\$13,200 incl GST) Other size offsets available are 1.8m, 2.2m, 2.5m, 3m & 3.4metres.
 3 point linkage offsets available also



New Heavy Duty SLASHERS

2.1 metres width \$3,300 incl GST
 Other sizes available are 1.2m, 1.5m & 1.8m

Johnny Farming Company
 Phone (07) 4952 2577 or 0412 535 887 (John)
 or 0407 638 674 (Andrew)
 133 Schmidtke Road Mackay Qld 4740

Graham Twyford Machinery Sales Pty Ltd

Specialising in Used Cane Harvesting Equipment Sales

2012 John Deere 3520 Wheel Harvester, JD 9 Litre engine, 8 blade chopper system, standard toppler.

2008 John Deere 3510 Wheel machine, JD 8.1 Litre engine, 4,200 hrs remanufactured engine, standard toppler.

2005 CAMECO 3510 Wheel Harvester, JD 8.1 Litre new engine, 3,500 Hrs. SAI chopper motor conversion 8 blade chopper.

1997 CASE Track Harvester Komatsu 325 HP engine 6,000 hrs. 15" x 8 blade, raised cab with tilt kit, standard toppler.

1995 CAMECO Track Harvester 325 HP CAT engine 1,500 hrs rebuilt engine. Very good condition for age.

Side Tippers BSM. Single axle units. 23x1x26 tyres. One fitted with New Holland TS115A.

CASE 7700 pump drive gearbox. Complete with eaton and vane pumps. 2006 model.

CANETEC PUMP BOX
 Complete 4 outlets

NEW! BILLET PLANTER 2500
 Rubber belt cane feed.
 Immediate delivery.

2x TOFT 7 tonne Hi-Lift side tipping trailers. Remote hydraulic's.
 23x1x30 tyres on single axles.

McLean three quarter tracks. 6 roller good condition. Suit CASE 8000 or Cameco 3510- JD 3520/570.

Whole Toppers 2 x CASE as new one is complete with hydraulic valve.

NEW! 4 SLAT OPEN BUTT ROLLERS
 Suit JD 3510/20 and CASE.
 Helps Drop Dirt. Enquire NOW!

IN STOCK NOW 12, 10, 8 & 6 BLADE DIFFERENTIAL CHOPPER DRUMS
 Suit '05 Cameco to JD 570. Tungsten hard faced on wear areas. New seal plates, clamping bars & dowels with kit.

Graham Twyford
48 Central Park Drive, Paget, Mackay
Mobile: +61 (0) 418 742 696
graham@gtmachinerysales.com.au
www.gtmachinerysales.com.au

Mossman-Tully

Howard 100" Hoe & Crumble Roller \$9,000,
 Howard 80" Ripper Hoe & Crumble Roller \$5,000. 12x1" Spring Tyne Grubber \$300,
 JD 6630 4WD 18.4.38 Rears, Air Cab, Power Quad, Cat 2 Quick hitch, Hydraulic Arm \$62,000. H.B.M Billet Planter, Wide Elevator & 2 x 100L Austral Tanks, Stainless Steel Fertiliser Boxes \$15,000. ALL O.N.O Plus GST. Ph: 0419 988 158.

Billet Planters for Sale

Cane growers and contractors,
 There has never been a better time to replace or upgrade your old Planter with a new HBM Single or Double Row Billet Planter.

To find out more phone: 07 4064 2049 or email hbmach@bigpond.com



ROCCA Industries

Price Guarantee
 If you find a competitor's lower price on the same item
 We'll Beat It By **10%**

Australian Designed and Engineered

ROCCA ST-350

The ROCCA ST-350 Heavy-Duty SpeedTiller is designed to chop up heavy crop residue, leaving behind a perfectly conditioned seedbed. It's fast speed saves money on fuel and labour costs. Where other machines leave hardpan compaction in the soil, the ROCCA ST-350 does not. Up to 26in discs available for good penetration in tough soil.

List Price: \$28,500
Now for a Limited Time -
\$22,950!
 (+GST +Freight)

1800 899 885
<https://www.roccaindustries.com>

Harvesters for Sale by Tender

- **Mackay** - Cameco CHW 2500 (1995) 6899 hours.
- **Bundaberg** - Austoft 7000 (1994) 5200 hours.

Items are offered for Tender on a 'for spare parts' basis.

For more information and to receive a tender form, please contact Anne at Sugar Research Australia on 07 4963 6810 or AMcNamee@sugarresearch.com.au

Tenders close Friday 19th April 2019.

4T HBM Side Tipper G.C. Set of 18" Bent Growser Plates with Nuts & Bolts, Set of BERCO Track Rollers & Primary Extractor Cleaning Chamber (all to suit Toft Harv). 1 x Toft Loader. Ph: 0428 100 564.

Silkwood Implement Hi-Rise Sprayer with 580 Fiat Tractor, \$40,000 + GST. Ph: 0429 652 235 or 0417 007 661.

1 of 13-6-24 tractor tyre. 2 of 16-9-30 tractor tyres. Best offer. Ph: 0488 633 777.

2 row bonel double fertiliser boxes inch and a quarter coil tynes works well worms in good condition \$425 + GST. 90 inch Howard heavy duty rotary hoe with ripper in front in good condition \$9,000 + GST. 2 sets of 4 foot Howard slasher bars \$100 each + GST. Ph: 0418 777 319.

Silkwood Implement Stick Planter with Chemical Tank Spares \$500 incl GST. Ph: 07 4065 2165.

1989 Toft 7000 wheel harvester. 5100eng hrs. Charlyns done up; New rubber rollers; 4 blade Westhill chop; + many upgrades. \$65,000 + GST. 2 x 4T HBM tippers. Ph: 0419 632 965.

2005 JD 6620 7310HRS coupled to Austoft Trailhaul Tyres 90%. Ideal for billet planter. Ph: 0407 162 514.

Herbert River-Burdekin

1977 International Acco 1830A Tandem Tray Top Truck. Rego Due September 2019. Machinery Inspection due August 2020.

IFIT ENGINEERING

29 Richardson St TULLY

CHOPPER DRUMS

- Clean efficient cutting with minimal losses
- **BIS80 blade seats for increased strength and wear resistance**
- Use 95mm blades
- Heavy duty
- Not prone to crossing over
- Proven conventional clamping (Bisalloy clamp bars optional)
- Good blade life
- Thrower mounting bars standard on 4, 6 and 8 blade drums (Optional on 10 blade)
- Available in 4, 6, 8, 10 and 12 blade, 15" and 12" to suit Case and John Deere harvesters
- Very competitively priced

EXTERNAL CHOPPER ADJUSTERS

Maximize your chopper performance and blade life with our chopper adjusters.

- Very easy to use
- Proven in a wide variety of conditions
- Available to suit Case and John Deere harvesters, **updated design to suit new style CH570 gearbox**

CHOPPER DRUM RECONDITIONING AND MODIFICATIONS

We modify existing drums to provide similar cutting geometry to our new drums for improved cutting, and add gusseting for extra strength.

BISALLOY CLAMP BARS

To suit IFIT and John Deere chopper drums. Made with ¾ UNF threads for increased clamping force.

For further information on these and other products and services:

Ph: (07) 4068 2811 or 0408 199 309

E: admin@iftengineering.com.au
www.iftengineering.com.au

Rainfall Report

brought to you by AustSafe Super

Location	Recorded rainfall (mm)		Average rainfall (mm) January-March
	7 days to 9am 11.03.19	Year to date 18.03.19	
Mossman	82	24	1216
Mareeba AP	8	8	503
Cairns	38	18	1260
Mt Sophia	16	4	1295
Babinda	0	0	1062
Innisfail	65	77	1212
Tully	74	6	834
Cardwell	37	40	1216
Lucinda	81	4	1783
Ingham	85	35	2132
Abergowrie	84	4	1276
Townsville	13	4	1474
Ayr DPI	92	0	822
Proserpine	186	9	1102
Mirani	93	4	1000
Mackay	104	14	589
Sarina (Plane Ck)	82	1	988
Bundaberg	8	28	101
Childers South	5	76	101
Maryborough	23	104	170
Tewantin	13	78	148
Eumundi	9	0	80
Nambour	36	66	209
Woongoolba	3	143	203
Murwillumbah	5	43	144
Ballina	2	56	140
Woodburn	36	58	111



**AustSafe
Super**



The industry super
fund for rural and
regional Australia

Zero indicates either no rain or no report was sent. These rainfall figures are subject to verification and may be updated later. Weather forecasts, radar and satellite images and other information for the farming community can be accessed on www.bom.gov.au. Weather report provided by the Bureau of Meteorology's Commercial Weather Services Unit.

Skid steer cat. Trencher auger 200 300 450 600. Buckets 1400 drain bucket. 8ton hino truck. POA all items. Ph: 0417 609 104 or 0429 776 373.

John Deere 7700 (1995) with Carta Bin (1996) - registered until 01/05/19. 6370 hours on the hour meter. 14t double elevator bin. \$85,000 +GST. Ph: David Richardson on 0437 550 811.

New Holland TM155 2004 model with a 14T carter tipper, twin doors, 1997 model; also John Deere 7730 2007 model with a 14T carter tipper, twin doors, 1997 model. POA. Ph: Joe 0429 652 050.

Mackay-Proserpine

12T self-propelled 6x6 elev infielder. Very good condition. Ph: 0438 606 578 (Mackay). 6t side/tipper on Leyland tandem. Good condition. Ph: 0438 606 578 (Mackay).

Don Mizzi 741 model on Fiat 750 special turbo plus MF102 half-tracks to suit. Ph: 0438 606 578 (Mackay).

Celli Tiger spike hoe, 2.5m wide with hydraulic crumble roller and oil cooler. Very good condition. Ph: 0438 606 578 (Mackay). 2015 Case Track Harvester 8800, Trimble GPS, shedder topper, hyd. adjustable fronts 1.50m to 1.85m. Balance valve fitted to front suspension; iFit engineering chopper drums; Glenella Engineering taper locks on chopper gears; Blackey Bisalloy elevator floors; greasing system fitted; Tungsten on front shoes; floating side walls & base cutter discs. All in good condition. Ph: 0427 617 807.

Isuzu 1989 FVR series service truck fitted with a 4400lt diesel tank with electric pump & meter; 3 hose reels for oil with air operated pumps; air grease pump; Swager hoses & fittings. RWC. Ph: 0427 617 807.

Track transporter; 2x6t side tippers; V10 Mercedes motor; Robot running gear. Good condition. Ph: 0427 617 807.

NEW HOLLAND TS110A 4WD, 110hp, 4,980hrs, \$42,900 Inc., KUBOTA M135X-DC 4WD, 135hp, 4,970hrs, \$44,000 Inc., KUBOTA M7040 4WD, 70hp 120hrs, c/w Front End Loader 2yr warranty \$43,800 Inc. Ph: 0418 788 643.

3 metre kuhn day rotarty hoe. NF105 harvester parts for sale. Ph: 0428 367 078.

76 John Deere Tractor. Ph: 07 4954 1174.

6t Ian Ritchie side tipper bin \$15,000 + GST. Ph: 0478 719 294.

1,200 litre diesel fuel tank with 12v electric pump & portable, \$500. Toft 6000 Harvester (upgraded) Moller Billet Planter; 3t tipper bin.

\$21,000. Ph: 0417 393 142 or 0428 186 261. Toft 4000, Cummins 6ct 8.3L engine 6580hrs, 12" chop, Set up for rear fill, 3 foot vertical primary. \$9000 incl GST. Koumala Ph: 0429 027 377.

Vicon PS 602 3PL fertiliser spreader VGC \$1,100 incl GST. Kverneland UN 7581 3PL self-loading silage wrapper VGC \$9,900 incl GST. MF 50H backhoe, 2WD, 4 in 1 front bucket, 1x450mm toothed rear bucket \$11,000 incl GST. Ph: 0401 165 694.

2500 Cameco full track cane harvester 1995/96 excellent condition. MF 1085 good condition. Poplin billet planter excellent Condition. Rinaudo 3t stainless steel Fertilizer box side dresser. Iffirance 3.5 inch hard hose irrigator, \$5000 plus GST. Howard 3 leg square plough. Ph: 0488 053 298.

2016 Case 8800 Track Machine, 2200 Hours, EHS 8 Blade Choppers, Trimble GPS, Blackey Bisalloy elevator floors, Standard Topper, 2 speed wheel motors, Pro Rata Engine Warranty. Very tidy machine. Ph: 0428 182 464.

Toft 6000 series 2, with a Cat 3306 engine, upgrade includes 7000 fronts, topper, steering and suspension, adjustable saws, also has a 6 blade greaves rotary chopper system and a 4 foot ceiling fan primary extractor and a rotating secondary plastic hood, cuts a good billet, ideal plant cutter \$27,000 + GST. Ph: 0418 720 373.

Bundaberg-Rocky Point

6T side tipper on Austin truck \$5,000 + GST. Trash incorporator, s/steel worm & plastic bin \$102,000 + GST. 2004 BA Falcon low kms \$6000 + GST. Irrigator and other implements available also. Ph: 0419 577 110.

Austoft plastic secondary extractor hood, good condition, \$550. Ph: 0413 584 728.

Wanted

3.5 metre rotary hoe. Ph: 0428 367 078.

Swinging knives suitable for toft 6000 harvester. Ph: 0409 766 271.

18.4/R42 tyre, any condition, any brand, will take just one or two tyres. Ph: 0408 562 046.

STL shares, genuine non-miller buyer. Ph: 0419 717 006.

Positions Vacant

Wanted experienced Harvester/Haulout operators for 2019 Cane Crush season.

Mechanical knowledge an advantage, immediate start, permanent position for the right applicant. Only experienced need to apply. PO Box 4066, Bundaberg South Qld 4670.

MSF Sugar: Farm Hand – South Johnstone area. Further information can be found on our website: www.msfsugar.com.au.

Property

Cane farm, Silkwood area. 39.94 ha total, 31.74 under cane on 2 freehold titles. 5 yr av 97 t/ha, Part Bruce Hwy frontage, and 7.5 Klms from Kurrimine Beach. Shed and bore water on 1 title. Ph: 0417 647 002.

92 acre lifestyle block, ex cane, cane ground was approx 65 acres, 3 bed house shed, power, water, 3 phase, landline, underground for irrigation, property runs along the Pioneer River located Mia Mia/Pinevale area Mirani Mackay. Suit persons wanting extra cane ground or a hobby farm \$550,000. Ph: 07 4959 1008.

GLEN ISLA Cane Farms - Tightly Held Area. Approx* 334.82 acres in 8 FH titles with fertile alluvial soils. 2 equip irrig bores, mains & hydrants, 190ML allocation. Qlder style home. Motivated Vendors looking to retire. Ph: Gary Johns 0427 241 250.

HOME BUSH/OAKENDEN Cane Farm for sale Mackay region. 100t/ha 5 year average 57 ha property. Fully laser levelled farm with a large bore & underground water mains. Block has 2 deeds 90 acre and 50 acre which can be sold separately. This year's crop, machinery shed with 3 phase power and water, tractor, irrigation winch, some implements and tail water pit pump included in sale. Siding on boundary, great soil, no rocks. Ph: Andrew 0428 597 324.

Cane farm PROSERPINE 199 hectares total 155 hectares under cane. 2018 crop 10500 ton approx. 495megs of water. 2x hardhoses and half of the farm is flood irrigated. Farm comes with machinery. 3 houses on the farm main house is fully airconed and has a large swimming pool. Ph: 0400 794 857.

Cane farm Tarakan Road ABERGOWRIE 270 acres freehold Genuine enquiries pls. Ph: 07 4777 4633 or 0408 608 664.

Tropical Paradise Cane Farm/Equestrian Training Property, 96 acres 6kms to PORT DOUGLAS. All farmable land, 70 acres producing quality cane, 25 acres set up for horses. Easy farm to maintain. Ph: Mandy 0408 880 724.



Soil Information System



SiS collects over 50 layers of spatially correct, 3D soil data to a depth of 1200mm

Use this data to improve your planting decisions

Match soil types to cane varieties

Understand your soil's water holding capacity and nutrient requirements

Know your soil constraints and develop zonal management plans, or Variable Rate prescriptions

1300 TRIMBLE

ACCREDITATION'S THE GOLD STANDARD

Let's show off the great work you're doing.

The destination's the same, but the journey's
different for everyone.

Contact your Smartcane BMP district facilitator to
discover what accreditation could look like for you.



Andrew with Burdekin district facilitator, Jasmine



Contact your district facilitator to find out more.



Your local fund is growing.

**AustSafe Super and Sunsuper will merge on
30 March 2019 and become stronger together as
one fund committed to rural and regional Australia.**



AustSafe Super and Sunsuper are merging

On 30 March 2019, AustSafe Super will merge with Sunsuper, to become stronger together as one fund committed to rural and regional Australia.

The merger, driven by the funds' shared values and commitment to members, provides an opportunity to expand the delivery of services and products to more than 480,000 members and 45,000 employers in rural and regional Australia.

With more than 1.3 million members and \$60 billion in funds under management, Sunsuper is one of the nation's largest and fastest-growing super funds¹. It is this size, scale, expertise and experience that ensures our members' super and retirement are in the best possible hands.

With trust and transparency never more important, Sunsuper is proud to be recognised by a number of organisations for being the best of the best when it comes to superannuation².



Help to reach your financial dreams

Sunsuper is a profit-for-members fund open to all Australians working in all industries and occupations. Just some of the benefits Sunsuper members enjoy include:



Low administration fees

Our administration fee of \$1.50 per week plus 0.10% p.a.³ is among the lowest in the industry.



Solid, long-term investment returns

With our investment expertise and experience, it's no surprise our Balanced investment option has outperformed the industry average over 1, 3, 5, 7 and 10 years⁴.



Valuable financial advice

Sunsuper members can get simple advice at no additional cost over the phone. Our qualified financial advisers can also help you with retirement planning strategies, investment choice, as well as salary sacrifice and government co-contribution set ups⁵.



Everyday discounts

Dream Rewards is our exclusive everyday discount program. We partner with retailers across Australia to give our members access to deals and discounts on whitegoods, computers, holidays, clothing, concert tickets, restaurants, adventure experiences, and more.



Easy account management

The Sunsuper app is free to download from the App Store and Google Play and allows you to manage your super anytime, anywhere with secure fingertip access.



1. As at 28 February 2019.
2. For ratings and awards information, visit sunsuper.com.au/ratingsagencies.
3. Percentage based fee applies to the first \$800,000 of your Super-savings account balance only (if your Super-savings account balance is over \$800,000 a nil percent Administration fee applies to the balance over \$800,000). Does not include investment fees and costs. Different fees apply to Income accounts.
4. Source: SuperRatings Fund Crediting Rate Survey January 2019. Warning: Past performance is not a reliable indication of future performance.
5. Our qualified financial advisers provide simple advice about your Sunsuper account at no additional cost. More comprehensive advice may incur a fee. SunsUPER employees provide advice as representatives of SunsUPER Financial Services Pty Ltd (ABN 50 087 154 818 AFSL No. 227867) (SFS), wholly owned by the SunsUPER Superannuation Fund.

Dreaming big and doing good for your community

Sunsuper's *Dreams for a Better World* program is all about getting behind local groups that are creating positive social and environmental change in our communities.


Australian not-for-profit organisations, grassroots community groups and now small businesses can apply to win a share of \$150,000 in grants to make a difference locally.

If you have a dream for your community, apply for a SunsUPER *Dreams for a Better World* grant and help improve the lives of many more Australians. You can also nominate, share, follow and vote.

Learn more at dreamsforabetterworld.com.au

Dream big and do good.

Dreams
FOR A BETTER WORLD

— Supported by  sunsuper. Powered by you. —

Dance for Parkinson's Australia
2018 round winner